



HIKING / WALKING SERIES

- **8 Trails.**
- **Self Guided.**
- **Team or Individual.**
- **Record your progress via trail mapping app of all 8 trails to complete the series.**
- **Must complete at least 1-2 miles of each trail.**
- **Register at GTCParks.org.**
- **For more information on maps, routes, apps, and incentives, please email TLstaub@gtcounty.org**

Georgetown County Parks & Recreation
2030 Church St. Georgetown, SC. 29440
(843) 545-3320 | www.GTCParks.org



**GEORGETOWN OUTDOOR ADVENTURE TRAILS
(GOAT)
HIKING / WALKING SERIES**



The Georgetown Outdoor Adventure Trails (G.O.A.T.) Hiking /Walking Series is a self-guided, do at your own pace challenge to hike/walk 8 different trail systems in Georgetown County. Each trail area requires a minimum of 1 to 2 miles, but you can do more as you see fit. The hikes can be done as a family, group of friends or individually. This is a fun challenge to get outdoors after the holidays and enjoy nature. Here is how to participate:

- 1 Plan a schedule of which Trails you are going to do and the distances.
- 2 Determine who you are going to hike/walk with during the challenge.
- 3 Come up with Hiking Team Name (**please keep the Hiking Team Names clean**)
- 4 Record your hikes and walks using a mapping app. (Strava, Altrails have a free version and there are others.)
- 5 Save your hikes and when you complete your 8 hikes/walks send them to Georgetown County Parks and Recreation. Send to t1staub@gtcounty.org
- 6 **HAVE FUN!**

GEORGETOWN OUTDOOR ADVENTURE TRAILS
HIKING / WALKING SERIES
TRAILS

	LOCATION	TRAILS
1	YACCA BEACH ACCESS GARDEN CITY	BEACH HIKE /1-5 MILES
2	BIKE PATH – HBSP N. LITCHFIELD/MURRELLS INLET	BIKE PATH N. LITCHFIELD TO MURRELLS INLET / 1 TO 6 MILES
3	LITCHFIELD INN ACCESS LITCHFIELD BEACH	BEACH ACCESS # LITCHFIELD INN TO MIDWAY INLET 1 TO 3 MILES
4	STABLES PARK PAWLEYS ISLAND	STABLES NATURE TRAIL 1 MILE
5	NW RECREATION COMPLEX CHOPPEE COMUNITY	CHOPPEE WOODS OR WHITE TAIL DEER TRAILS 1 TO 3 MILES
6	ROCKY POINT LANDING ROCKY POINT COMMUNITY FOREST	COACHMAN TRAIL (GREEN) OR CHOPPEE CREEK TRAIL (RED) 1.5 TO 2.5 MILES
7	8 OAKS PARK HWY 521 GEORGETOWN	HIKE 1 OF 4 TRAILS 1 TO 4 MILES
8	COUNTY COURT HOUSE GEORGETOWN	HISTORIC GEORGETOWN URBAN TRAIL / WALK 2 MILES

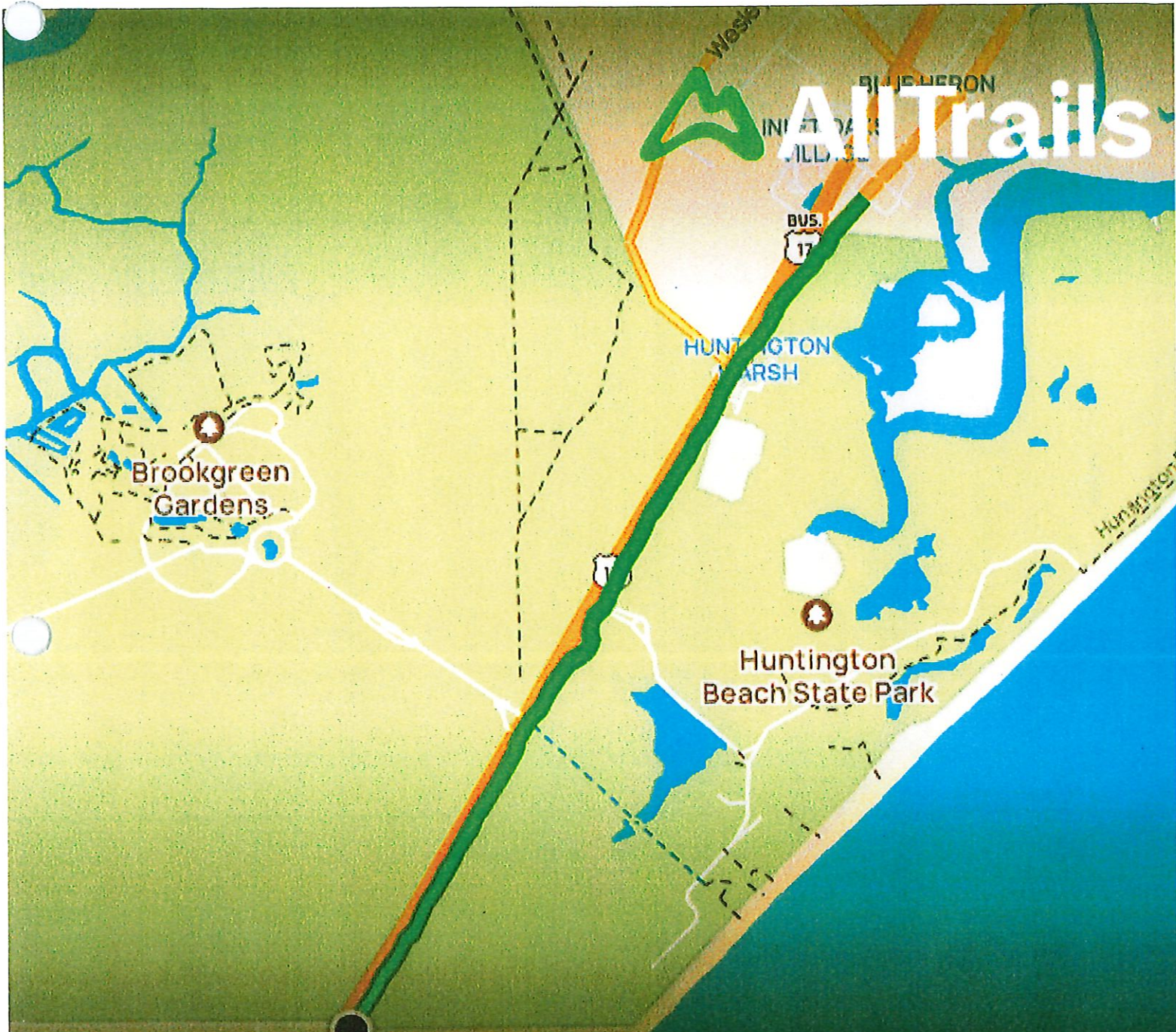
TRAIL NAME	LOCATION	USAGE	TYPE	MILES	SURFACE
GARDEN CITY BEACH WALK	GARDEN CITY	HIKE/BIKE	OUT/BACK	5.0	BEACH SAND
TRAIL HEAD		YUCCA BEACH ACCESS (#1)			
TRAIL / ROUTE MARKINGS		NONE			
DISCRIPTION / COMMENTS					
BEACH TRAIL / WALK ALONG THE BEACH STARTING AT YUCCA BEACH ACCESS (ACCESS #1) (ACCESS 1) AND HEADING SOUTH DOWN THE BEACH TOWARDS THE JETTIES.					
MARKED DISTANCES 1 MILE / 2 MILE / 3 MILE / 4 MILE / 5 MILE					
DISTANCE MILES					
0.00	TRAIL-HEAD BEGINS AT YUCCA ACCESS HEAD SOUTH RIGHT ALONG BEACH				
0.50	BEACH ACCESS # 6 (TURN AROUND TO COMPLETE 1 MILE TOTAL)				
1.00	BEACH ACCESS # 16 (TURN AROUND TO COMPLETE 2 MILE TOTAL)				
1.50	BEACH ACCESS # 36 (TURN AROUND TO COMPLETE 3 MILE TOTAL)				
2.00	BEACH ACCESS # 39 (TURN AROUND TO COMPLETE 4 MILE TOTAL)				
2.50	BEACH ACCESS # 43 (TURN AROUND TO COMPLETE 5 MILE TOTAL)				





TRAIL NAME	LOCATION	USAGE	TYPE	MILES	SURFACE
BIKE PATH HUNTINGTON BEACH SP SECTION	HUNTINGTON BEACH SP	HIKE/BIKE	POINT TO POINT OR OUT AND BACK	2.9 OR 5.8	PAVEMENT
TRAIL HEAD		US 17 AND TRACE DR PARKING AREA			
TRAIL / ROUTE MARKINGS		NONE			
DISCRIPTION / COMMENTS					
<p>PAVED TRAIL STARTING FROM TRACE DR (SOUTH END) HEADING NORTH TO THE WOODEN WALK WAY AND THE START OF THE MURRELLS INLET BIKE LANES</p> <p style="text-align: center;">NOTE:</p> <p>CONTINUE ON THE MURRELLS INLET BIKE LANE TO THE COUNTY LINE AND BACK TO ADD AN ADDITIONAL 6 MILES</p>					
DISTANCE MILES					
0.00	TRAIL ENTRANCE AT TRACE DRIVE HEADING NORTH				
1.00	SOUTH GATE OF HUNTINGTON BEACH STATE PARK				
1.40	MAIN GATE OF HUNTINGTON BEACH STATE PARK				
2.30	OYSTER LANDING PARKING AREA				
2.90	NORTH END OF PATH (TURN AROUND)				
5.80	SOUTH END OF TRAIL SEGMENT (STARTING POINT)				

AllTrails

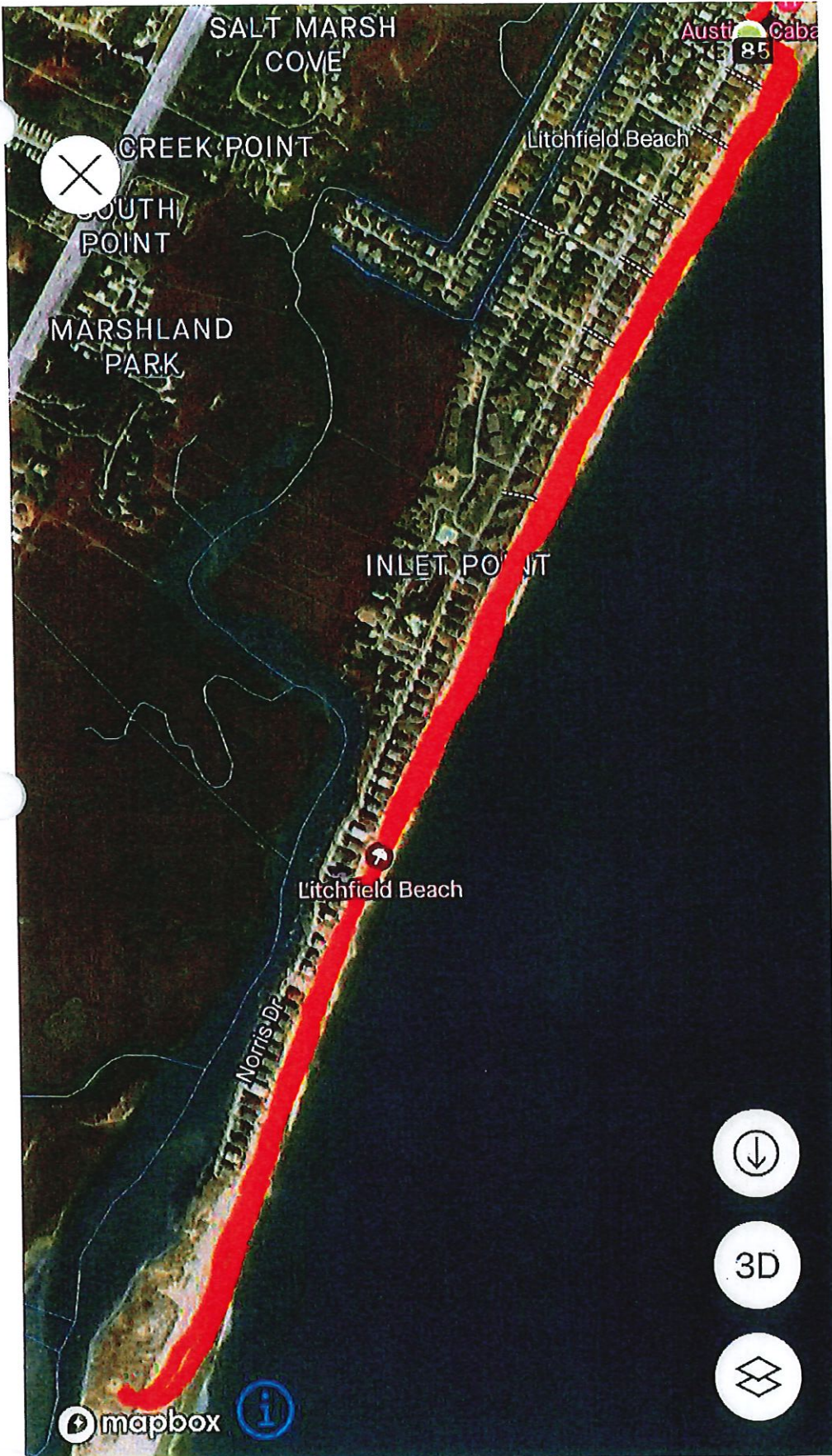


Mountain biking
5.8 mi

Elev. gain
10 ft

Time
38:39

TRAIL NAME	LOCATION	USAGE	TYPE	MILES	SURFACE
LITCHFIELD BEACH WALK	LITCHFIELD INN TO MIDWAY INLET	HIKE/BIKE	OUT/BACK	2.0	BEACH SAND
TRAIL HEAD		BEACH ACCESS SOUTH OF LITCHFIELD INN			
DISCRIPTION / COMMENTS					
<p>THE BEACH WALK STARTS AT PUBLIC ACCESS 60 NEXT TO LITCHFIELD INN AND HEADS SOUTH TO MIDWAY INLET. ACROSS THE INLET YOU WILL SEE THE NORTH END OF PAWLEYS ISLAND</p> <p>PUBLIC PARKING ACROSS FROM THE LITCHFIELD INN ALONG THE ROAD</p>					
DISTANCE MILES					
0.00	TRAIL-HEAD BEGINS AT LITCHFIELD INN PUBLIC ACCESS 60 HEAD SOUTH RIGHT ALONG BEACH				
1.00	REACH MIDWAY INLET APPROXIMATELY 1.00 MILES (TURN AROUND AND HEAD BACK)				
2.00	RETURN TO BEACH ACCESS 60 WALK COMPLETED				



STABLES PARK WALKING TRAIL	LITCHFIELD	HIKE	OUT AND BACK	1.0	DIRT/GRASS
TRAIL HEAD	TRAIL HEAD IS AT THE END OF THE PARKING LOT				
TRAIL / ROUTE MARKINGS	YELLOW				
DISCRIPTION / COMMENTS					
<p>WALKING TRAIL ALONG THE EDGE OF THE OLD PASTURE AT STABLES PARK. THE TRAIL STARTS AT THE END OF THE PARKING LOT AND RUNS ALONG THE RIGHT EDGE OF THE PASTURE TO THE NORTHERN POINT AND BACK</p> <p>TRAIL IS ALSO ON THE EDGE OF THE FRISBEE DISC GOLF COURSE. BEWARE OF FLYING DISCS DISC GOLFERS HAVE THE RIGHT OF WAY</p>					
DISTANCE MILES					
0.00	TRAIL-HEAD LOCATED AT THE END OF THE PARKING LOT				
0.10	WALK ALONG THE RIGHT EDGE OF THE PASTURE				
0.20	TRAIL RUNS NORTH ALONG THE EDGE OF THE PASTURE BETWEEN THE PONDS AND WOODLINE				
0.50	NORTHERN END OF THE TRAIL TURN AROUND AND RETURN BACK SAME TRAIL				
1.00	RETURN TO THE TRAIL-HEAD				



Aspen Loop



AllTrails



Hiking
1.1 mi

Elev. gain
3 ft

Time
20:58

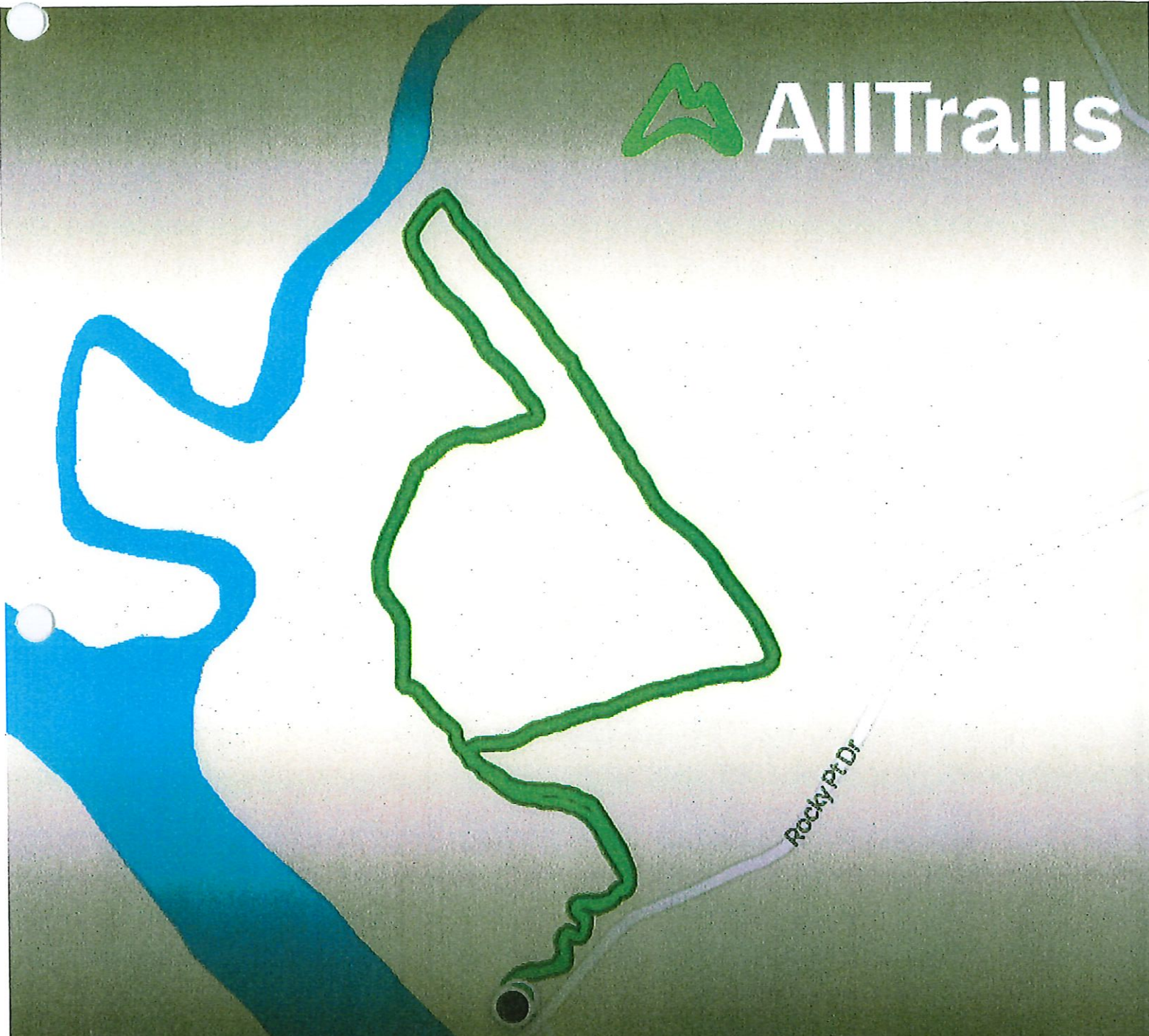
TRAIL NAME/ROUTE	LOCATION	USAGE	TYPE	MILES	SURFACE
COACHMAN TRAIL	ROCKY POINT COMMUNITY FOREST	HIKE/ BIKE	LOOP	1.26	DIRT
TRAIL HEAD	ROCKY POINT LANDING PARKING LOT				
TRAIL /ROUTE MARKINGS	GREEN				
DISCRIPTION / COMMENTS					
TRAILHEAD IS LOCATED AT THE PARKING AREA FOR ROCKYPOINT LANDING AT THE END OF ROCKY POINT ROAD. THIS TRAIL PASSES BY THE OLD COACHMAN CEMETERY					
TRAIL ROUTE DIRECTIONS					
DISTANCE MILES					
0.00	START AT THE TRAILHEAD				
0.14	TURN LEFT ON TRAIL				
0.68	TURN RIGHT (RED TRAIL GOES STRAIGHT)				
0.88	TURN RIGHT				
0.98	TURN LEFT				
1.12	TURN RIGHT				
1.26	RETURN TO TRAILHEAD				



Rocky Point



AllTrails



Rocky Pt Dr

Hiking

1.4 mi

Elev. gain

7 ft

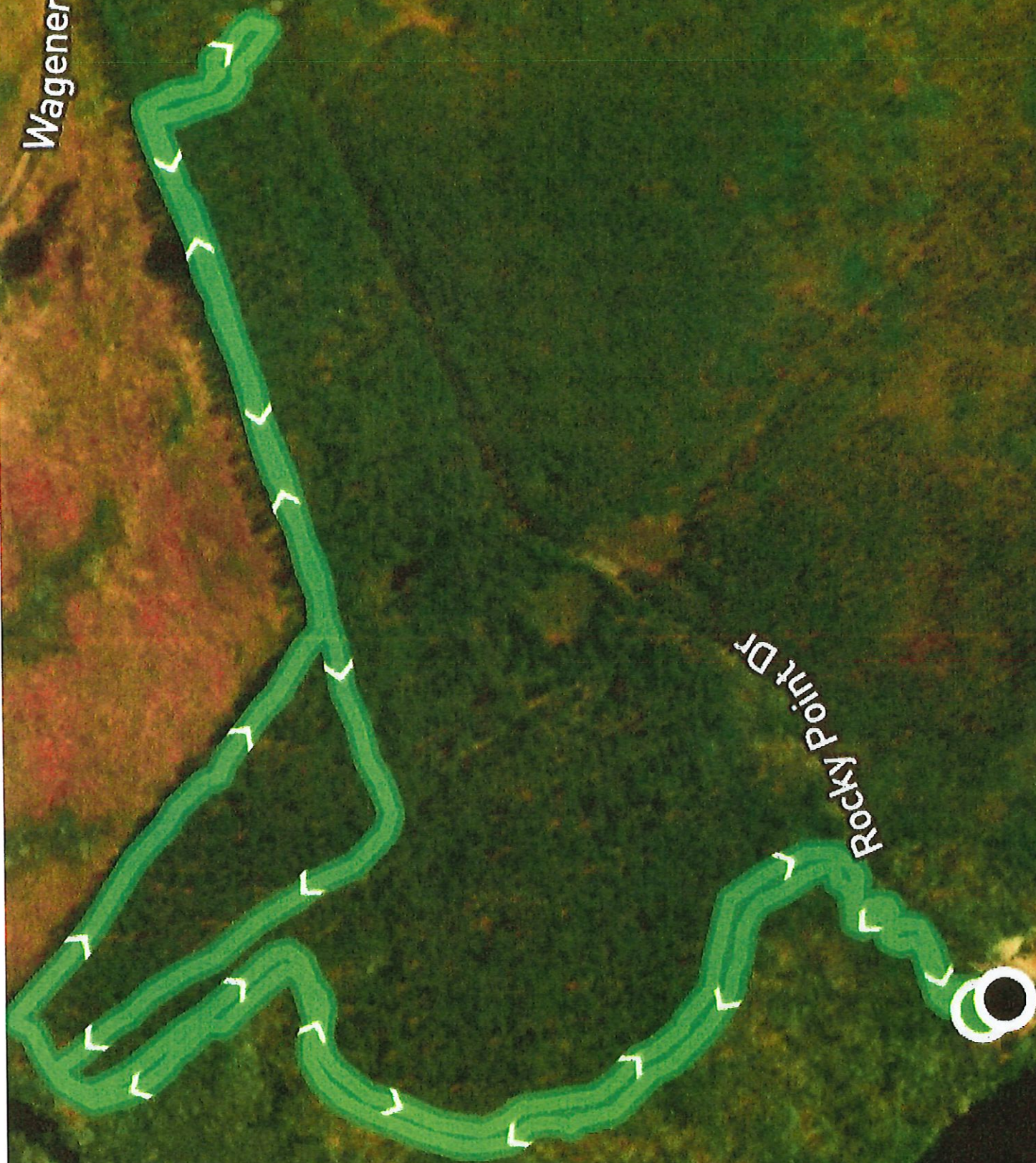
Time

31:58

TRAIL NAME/ROUTE	LOCATION	USAGE	TYPE	MILES	SURFACE
CHOPPEE CREEK TRAIL	ROCKY POINT COMMUNITY FOREST	HIKE/ BIKE	LOOP	2.6	DIRT
TRAIL HEAD		ROCKY POINT LANDING PARKING LOT			
TRAIL / ROUTE MARKINGS		RED			
DISCRIPTION / COMMENTS					
TRAILHEAD IS LOCATED AT THE PARKING AREA FOR ROCKYPOINT LANDING AT THE END OF ROCKY POINT ROAD					
TRAIL ROUTE DIRECTIONS					
DISTANCE MILES					
0.00	START AT THE TRAILHEAD				
0.14	TURN LEFT ON TRAIL				
0.68	GO STRAIGHT (GREEN TRAIL GOES RIGHT AND RED TRAIL RETURNS)				
0.88	VEER LEFT (CAN TURN RIGHT TO MAKE SHORTER TRIP (1.5 MI)				
1.18	TURN RIGHT				
1.28	TRAIL COMES OUT ON ROCKY POINT RD-TURN BACK ON TRAIL (OR GO RIGHT ON ROAD BACK TO PARKING LOT = 1.78 TOTAL MILES)				
1.38	TURN LEFT				
1.68	VEER LEFT ON TRAIL				
1.78	TURN RIGHT				
1.98	TURN LEFT				
2.52	TURN RIGHT				
2.66	TRAIL END				

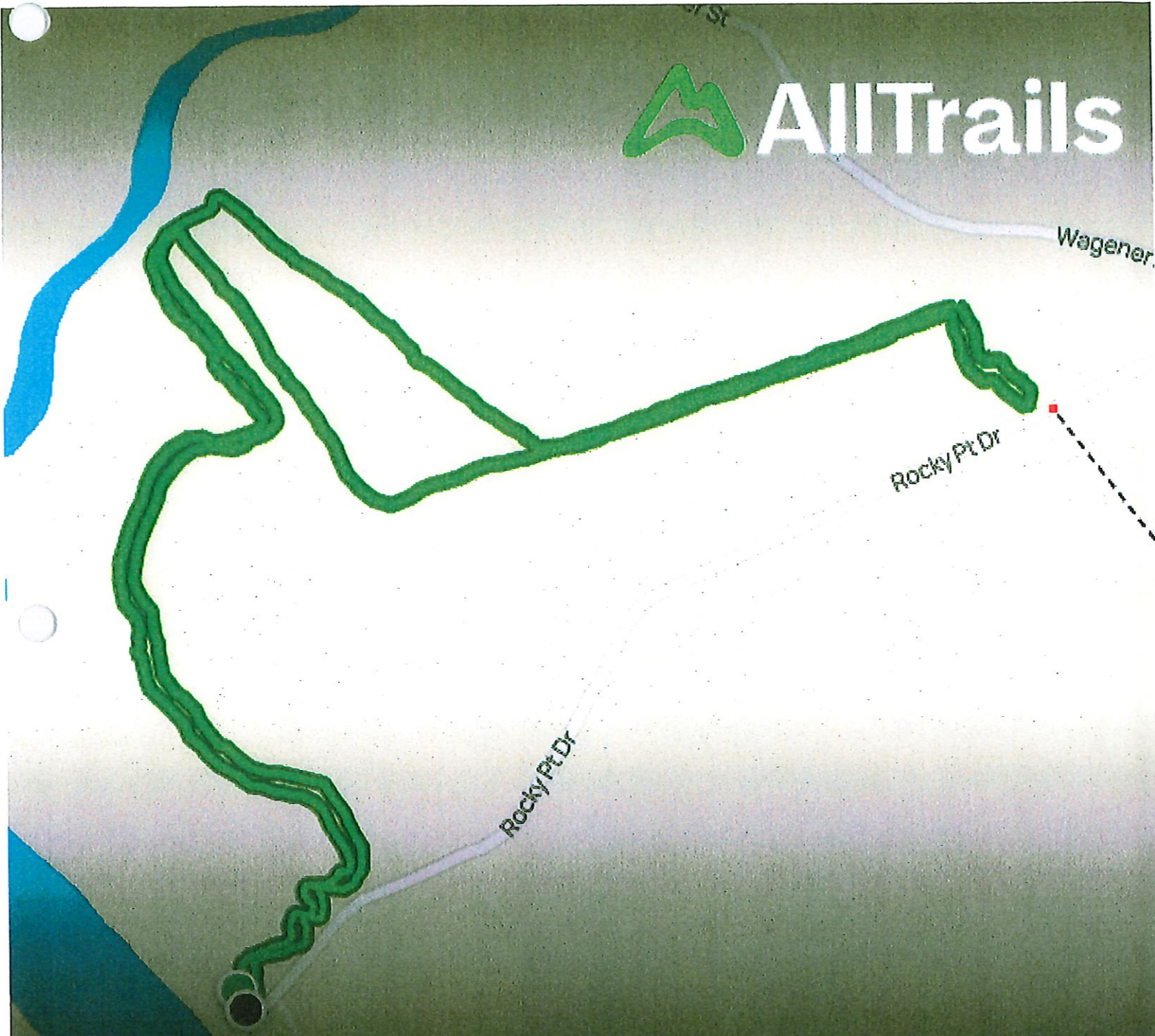
Wagener St

Rocky Point Dr





AllTrails



Hiking
2.5 mi

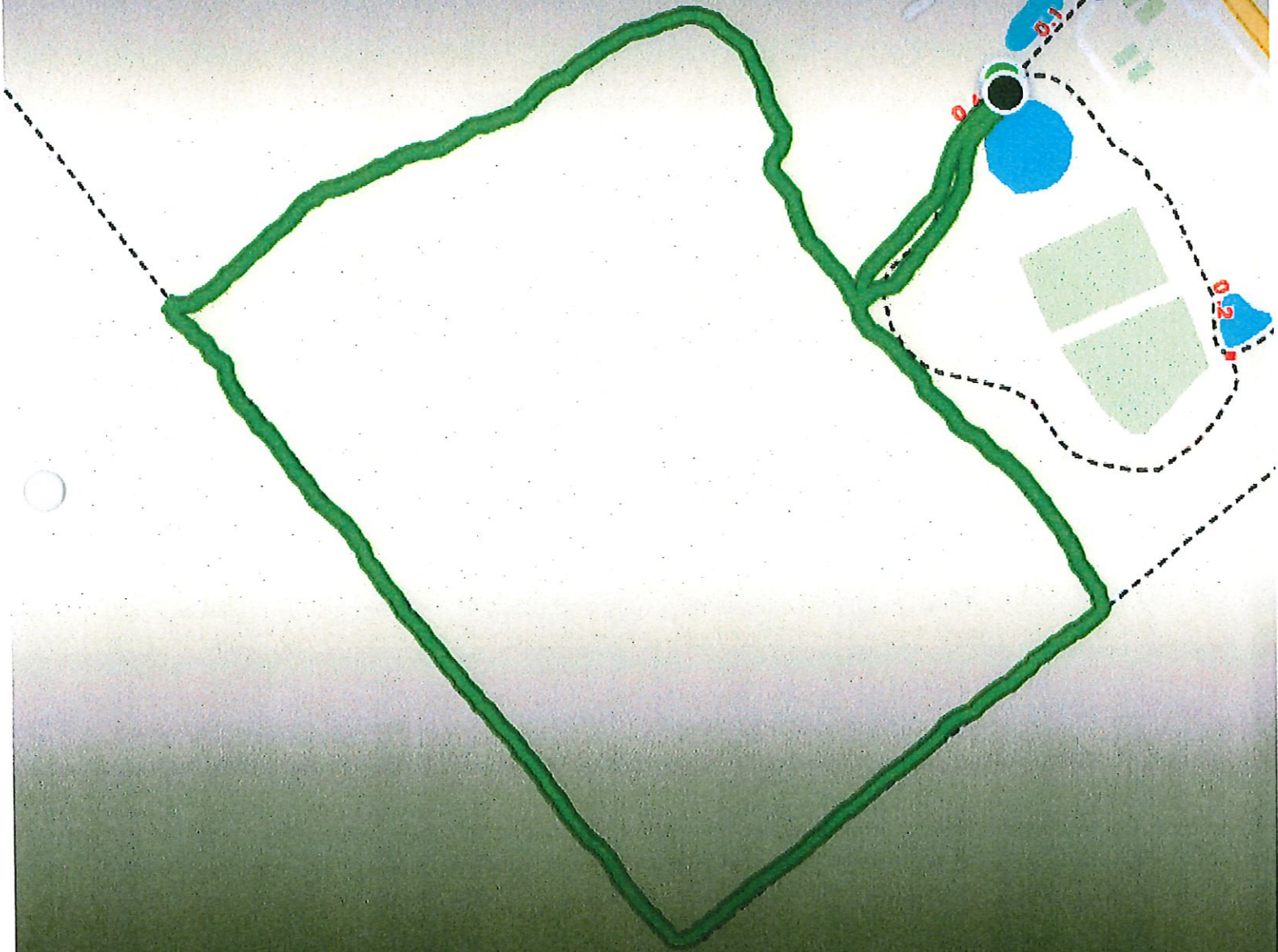
Elev. gain
13 ft

Time
57:06

TRAIL NAME	LOCATION	USAGE	TYPE	MILES	SURFACE
CHOPPEE WOODS TRAIL	ROCKY POINT COMMUNITY FOREST	HIKE/BIKE	LOOP	1.9	DIRT
TRAIL HEAD	NORTH WEST RECREATION COMPLEX – (SOUTHWEST CORNER OF PARKING LOT)				
TRAIL / ROUTE MARKINGS	BLUE				
DISCRIPTION / COMMENTS					
THE BLUE TRAIL HEAD IS 0.15 MILES ON THE CHOPPEE EXERCISE TRAIL FROM THE TRAIL INFORMATION CENTER IN THE NORTH WEST RECREATION COMPLEX PARKING LOT THE CHOPPEE WOODS TRAIL IS 1.9 MILES					
DISTANCE MILES					
0.00	GO RIGHT ON THE CHOPPEE EXERCISE TRAIL AND THE TRAIL WILL CIRCLE LEFT				
0.15	BLUE TRAILHEAD IS ON THE RIGHT / ENTER TRAIL AND TURN RIGHT				
0.25	TURN LEFT AND GO UP THE DIRT MOUND AND THEN FOLLOW TRAIL MARKERS				
0.75	TURN LEFT ON THE TRAIL (OLD ROAD BED)				
0.85	GO STRAIGHT ON TRAIL (ORANGE TRAIL GOES TO THE RIGHT)				
1.20	TURN LEFT ON TRAIL (ORANGE TRAIL VEERS TO THE RIGHT)				
1.55	TURN LEFT ON TRAIL (OFF OF THE OLD ROAD BED) FOLLOW TRAIL BACK TO TRAILHEAD				
1.75	TRAILHEAD IS ON YOUR RIGHT				
1.90	TURN RIGHT OR LEFT ON TO THE CHOPPEE TRAIL TO RETURN TO THE PARKING LOT				



AllTrails



Hiking

1.8 mi

Elev. gain

0 ft

Time

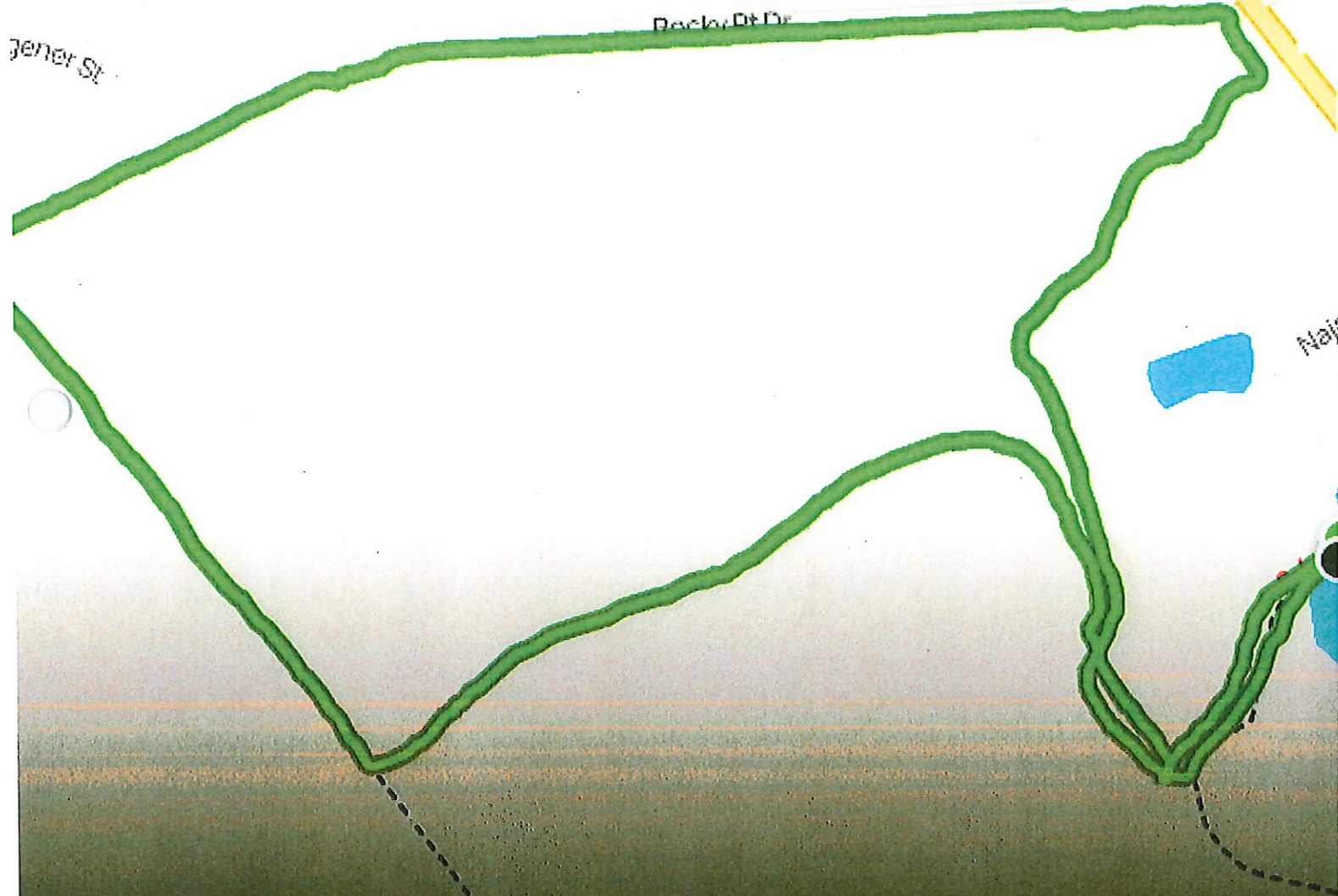
47:09



TRAIL NAME	LOCATION	USAGE	TYPE	MILES	SURFACE
WHITE TAIL DEER TRAIL	ROCKY POINT COMMUNITY FOREST	HIKE/ BIKE	LOOP	2.2	DIRT
TRAIL HEAD	NORTH WEST RECREATION COMPLEX – (SOUTHWEST CORNER OF PARKING LOT)				
TRAIL /ROUTE MARKINGS	WHITE				
DISCRIPTION / COMMENTS					
<p>THE WHITE TRAIL HEAD IS 0.15 MILES ON THE CHOPPEE EXERCISE TRAIL FROM THE TRAIL INFORMATION STATION IN THE CHOPPEE COMPLEX PARKING LOT THE WHITE TRAIL IS 2.2 MILES LONG.</p> <p style="text-align: center;">USE CAUTION PART OF THE WHITE TRAIL IS ON ROCKY POINT RD WHICH AS VEHICLE TRAFFIC ON IT</p>					
0.00	GO RIGHT ON THE CHOPPEE EXERCISE TRAIL AND THE TRAIL WILL CIRCLE LEFT				
0.15	WHITE TRAILHEAD IS ON THE RIGHT / ENTER TRAIL AND TURN RIGHT				
0.25	FOLLOW TRAIL STRAIGHT (BLUE TRAIL GOES TO THE LEFT AND WHITE TRAIL RETURN)				
0.65	TURN LEFT ON THE TRAIL WHICH IS ROCKY POINT RD. (USE CAUTION VEHICLE TRAFFIC ON ROADWAY)				
1.15	TURN LEFT ON TRAIL GO PAST GATE AND STRAIGHT (OLD ROAD BED)				
1.45	TURN LEFT ON TRAIL FOLLOW WHITE AND BLUE TRAIL MARKERS				
1.95	TURN RIGHT ON TRAIL AND RETURN TO THE TRAILHEAD				
2.05	TRAILHEAD IS ON YOUR LEFT				
2.20	TURN RIGHT OR LEFT ON TO THE CHOPPEE TRAIL TO RETURN TO THE PARKING LOT				



AllTrails



Hiking

2.3 mi

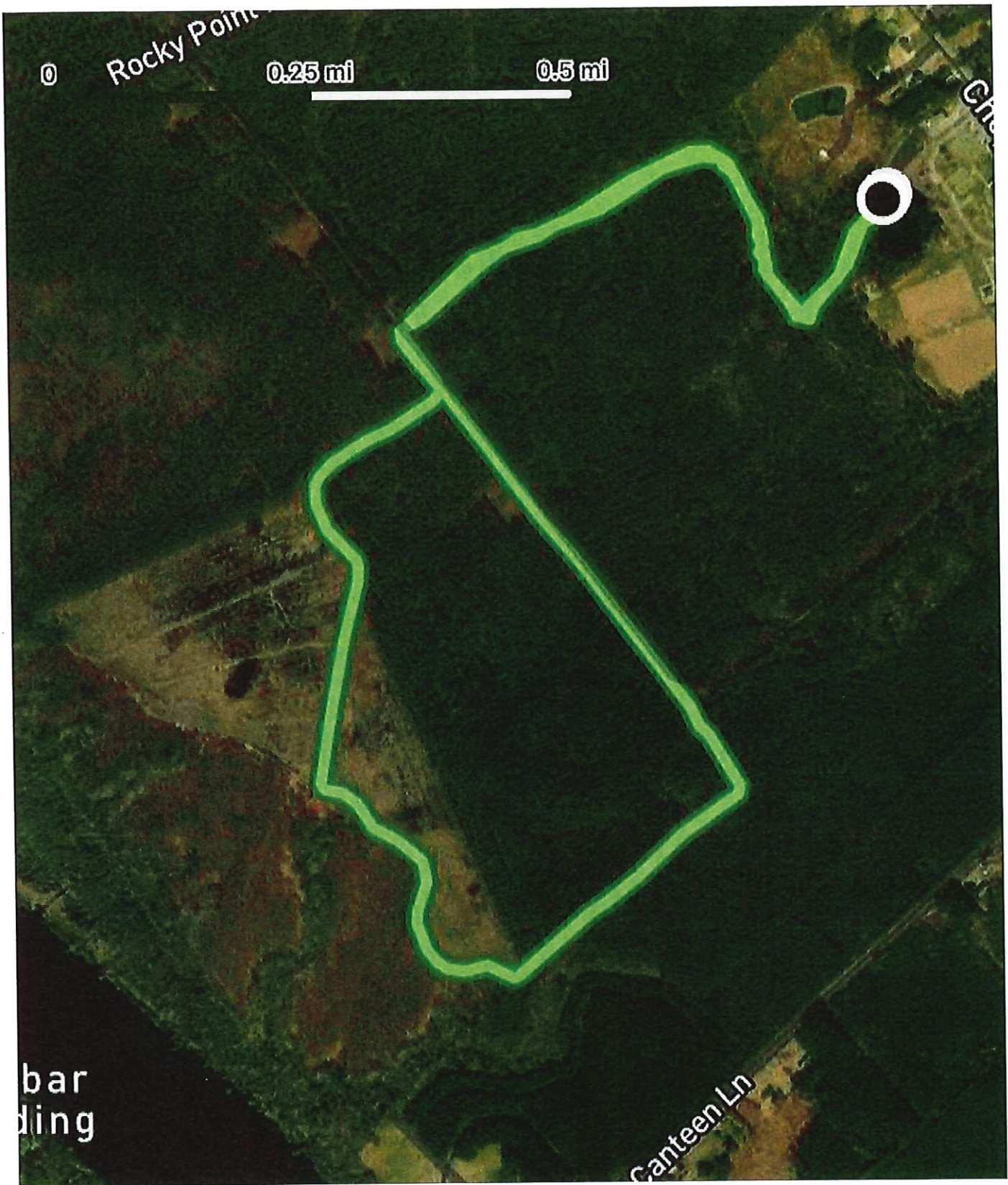
Elev. gain

0 ft

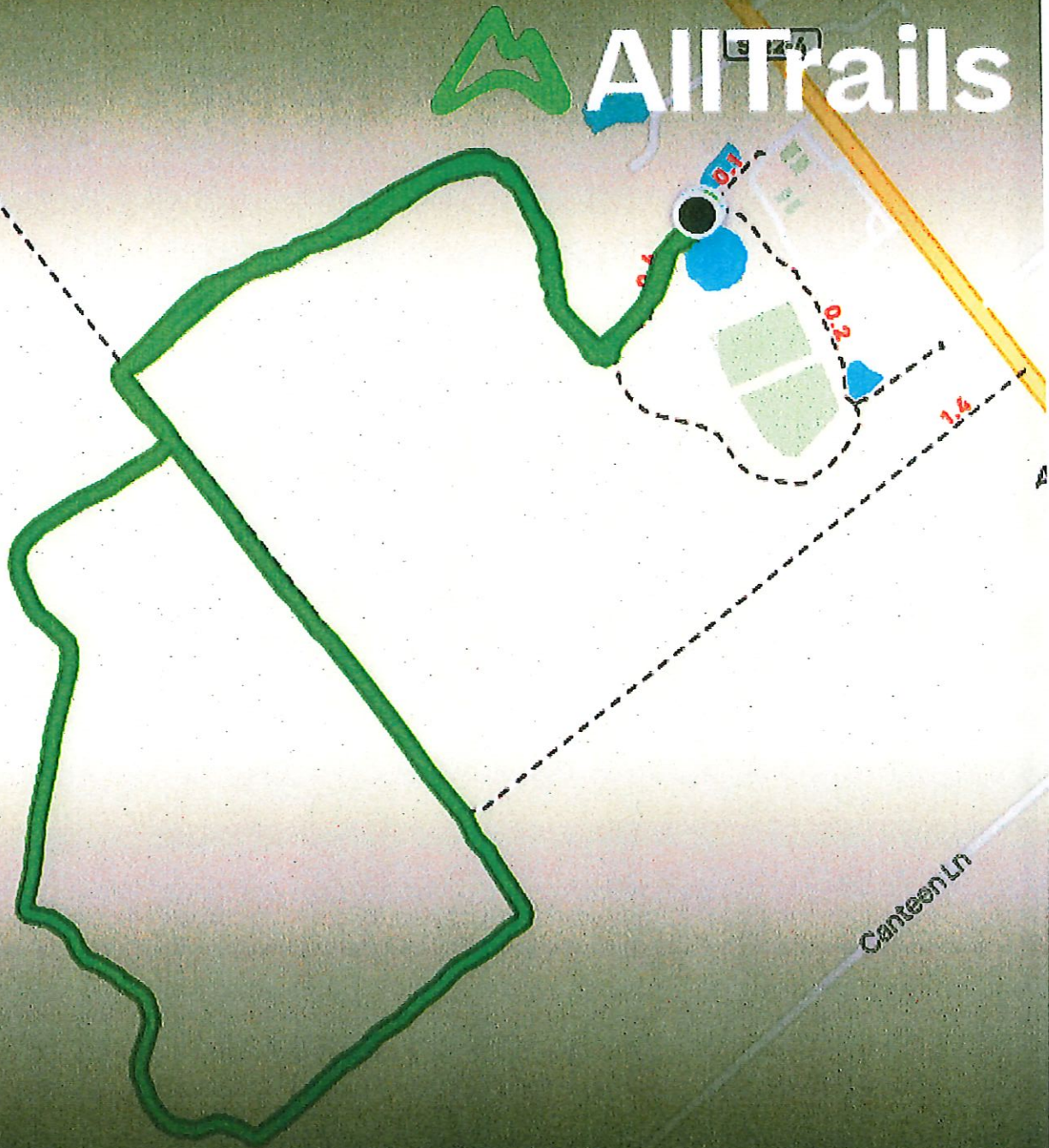
Time

51:30

TRAIL NAME	LOCATION	USAGE	TYPE	MILES	SURFACE
BACK COUNTRY ROUTE (BLUE/ORANGE)	ROCKY POINT COMMUNITY FOREST	HIKING / BIKING	LOOP	3.0	DIRT
TRAIL HEAD	NORTH WEST RECREATION COMPLEX – (SOUTHWEST CORNER OF PARKING LOT)				
TRAIL / ROUTE MARKINGS	BLUE / ORANGE				
DISCRIPTION / COMMENTS					
THIS ROUTE STARTS AT THE NORTHWEST RECREATION COMPLEX AND FOLLOWS PARTS OF THE BLUE AND ORANGE MARKED TRAILS FOR A DISTANCE OF 3.0 MILES					
DISTANCE MILES					
0.00	CHOPPEE TRAILHEAD				
0.20	FOLLOW THE NATURE TRAIL TO THE CHOPPE WOODS TRAIL HEAD AND TURN RIGHT FOLLOWING THE BLUE TRAIL MARKERS				
0.30	TURN LEFT AND CROSS THE BRIDGE FOLLOWING THE BLUE TRAIL MARKERS.				
0.70	AT THE LOGGING ROAD TURN LEFT AND FOLLOW THE BLUE TRAIL MARKERS				
0.80	AFTER FOLLOWING THE BLUE ROUTE TO THE INTERSECTION WITH THE LONG PINE TRAIL (ORANGE MARKERS) TURN RIGHT AND FOLLOW THE ORANGE MARKERS				
1.20	TURN LEFT AND CONTINUE TO FOLLOW THE ORANGE MARKERS UNTIL IT CIRCLES BACK TO THE BLUE TRAIL				
1.90	TURN LEFT ON THE BLUE TRAIL				
2.40	FOLLOW BLUE TRAIL MAKING A RIGHT AND CONTINUE BACK TO THE TRAIL HEAD. YOU WILL CROSS BACK OVER THE BRIDGE AND TURN RIGHT. RETURN BACK ON THE PAVED PORTION.				
3.00	ROUTE COMPLETED				



AllTrails

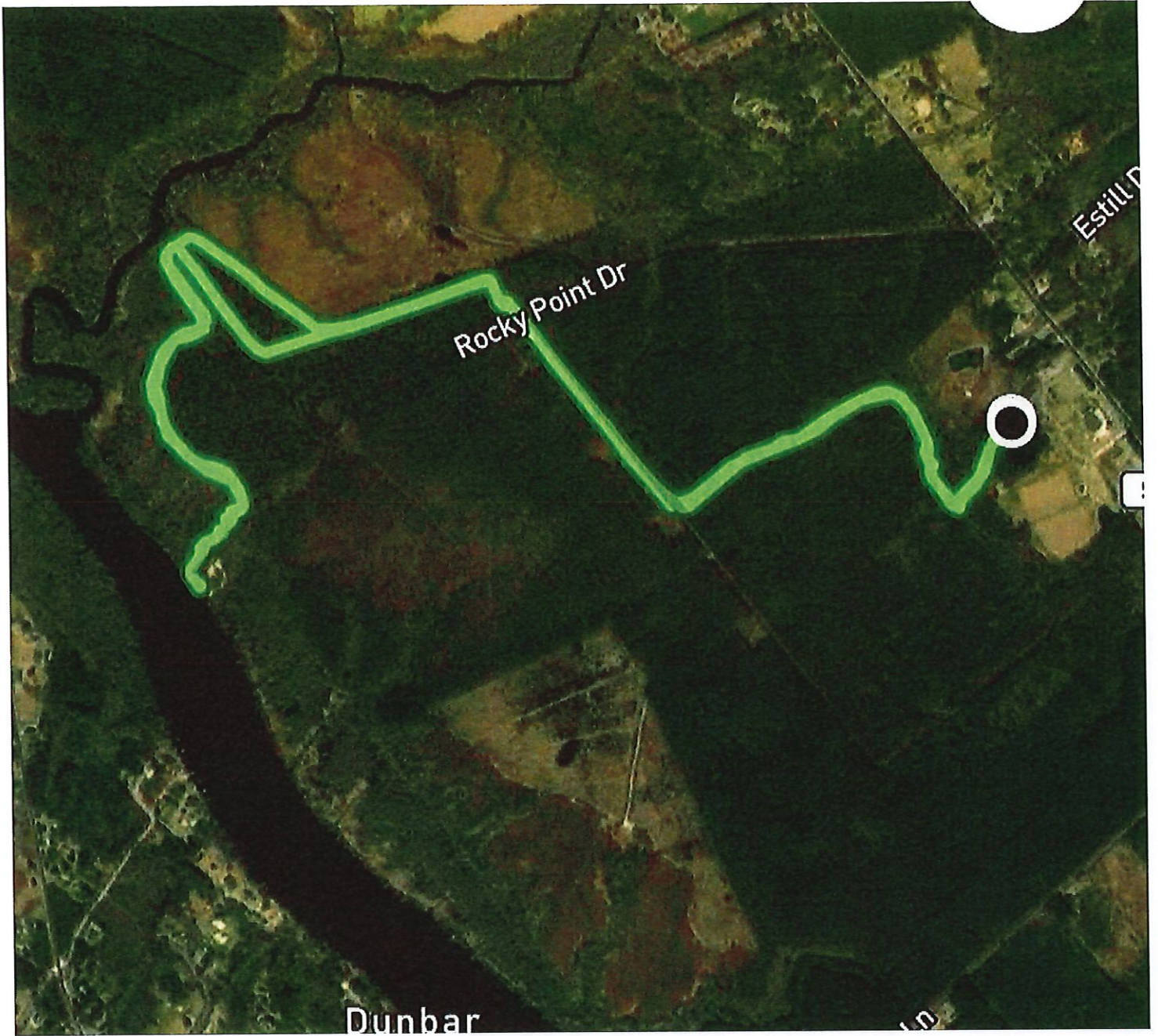


Hiking
3.0 mi

Elev. gain
0 ft

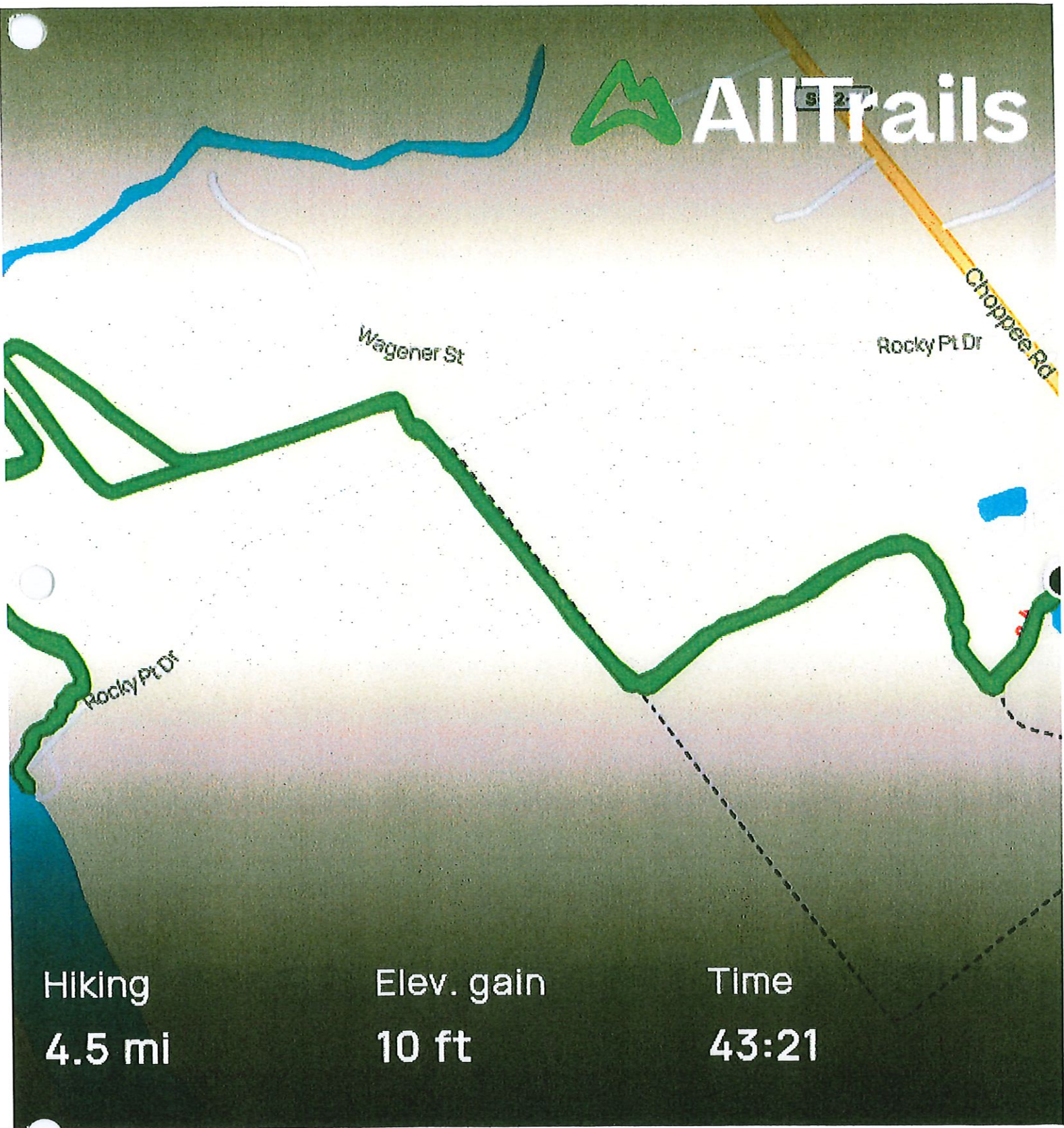
Time
31:20

TRAIL NAME	LOCATION	USAGE	TYPE	MILES	SURFACE
ROCKY POINT ROUTE (BLUE/WHITE/RED)	ROCKY POINT COMMUNITY FOREST	HIKING / BIKING	OUT AND BACK	4.5	DIRT
TRAIL HEAD	NORTH WEST RECREATION COMPLEX – (SOUTHWEST CORNER OF PARKING LOT)				
TRAIL / ROUTE MARKINGS	BLUE / WHITE / RED				
DISCRIPTION / COMMENTS					
THIS ROUTE STARTS AT THE NORTHWEST RECREATION COMPLEX AND FOLLOWS PARTS OF THE BLUE, WHITE AND RED MARKED TRAILS FOR A DISTANCE OF 4.5 MILES THIS IS AN OUT AND BACK ROUTE					
DISTANCE MILES					
0.00	CHOPPEE TRAILHEAD				
0.20	FOLLOW THE NATURE TRAIL TO THE CHOPPE WOODS TRAIL HEAD AND TURN RIGHT FOLLOWING THE BLUE TRAIL MARKERS				
0.30	TURN LEFT AND CROSS THE BRIDGE FOLLOWING THE BLUE TRAIL MARKERS.				
0.70	AT THE LOGGING ROAD TURN RIGHT AND FOLLOW THE TRAIL TO ROCKY POINT ROAD				
1.00	CROSS ROCKY POINT ROAD AND ENTER THE CHOPPEE CREEK TRAIL (RED) AND FOLLOW THE TRAIL TO ROCKY POINT LANDING				
1.40	VEER LEFT OR RIGHT AND CONTINUE TO FOLLOW THE RED MARKERS				
2.25	REACH ROCKY POINT LANDING				
2.25	TURN AROUND AND FOLLOW THE RED TRAIL MARKERS BACK TO ROCKY POINT RD AND CROSS THE ROAD AND FOLLOW THE WHITE TRAIL MARKERS BACK TO THE TRAIL HEAD				
4.50	ROUTE COMPLETED				





AllTrails



Hiking

4.5 mi

Elev. gain

10 ft

Time

43:21

TRAIL NAME	LOCATION	USAGE	TYPE	MILES	SURFACE
8 OAKS WALKING TRAIL	8 OAKS PARK	EXERCISE	LOOP	1.0	GRASS
TRAIL HEAD		EIGHT PARK OAKS ENTRANCE PARKING LOT (OUTSIDE THE GATE)			
TRAIL / ROUTE MARKINGS		YELLOW			
DISCRIPTION / COMMENTS					
THE 8 OAKS LOOP WALKING TRAIL IS A 1 MILE LOOP AROUND THE BASEBALL COMPLEX, THE OTHER TRAILS IN THE PARK START OFF OF THIS WALKING TRAIL					
DISTANCE MILES					
0.00	TRAIL STARTS AT THE 8 OAKS TRAIL-HEAD (TRAIL GOES COUNTER CLOCK WISE)				
0.30	BLUE TRAIL - TRAILHEAD				
0.40	GREEN TRAIL - TRAILHEAD				
0.50	RED COYOTE - TRAIL-HEAD				
1.00	RETURN TO THE 8 OAKS TRAIL-HEAD				



AllTrails



Mountain biking

Elev. gain



Time

1.1 mi

3 ft

10:46

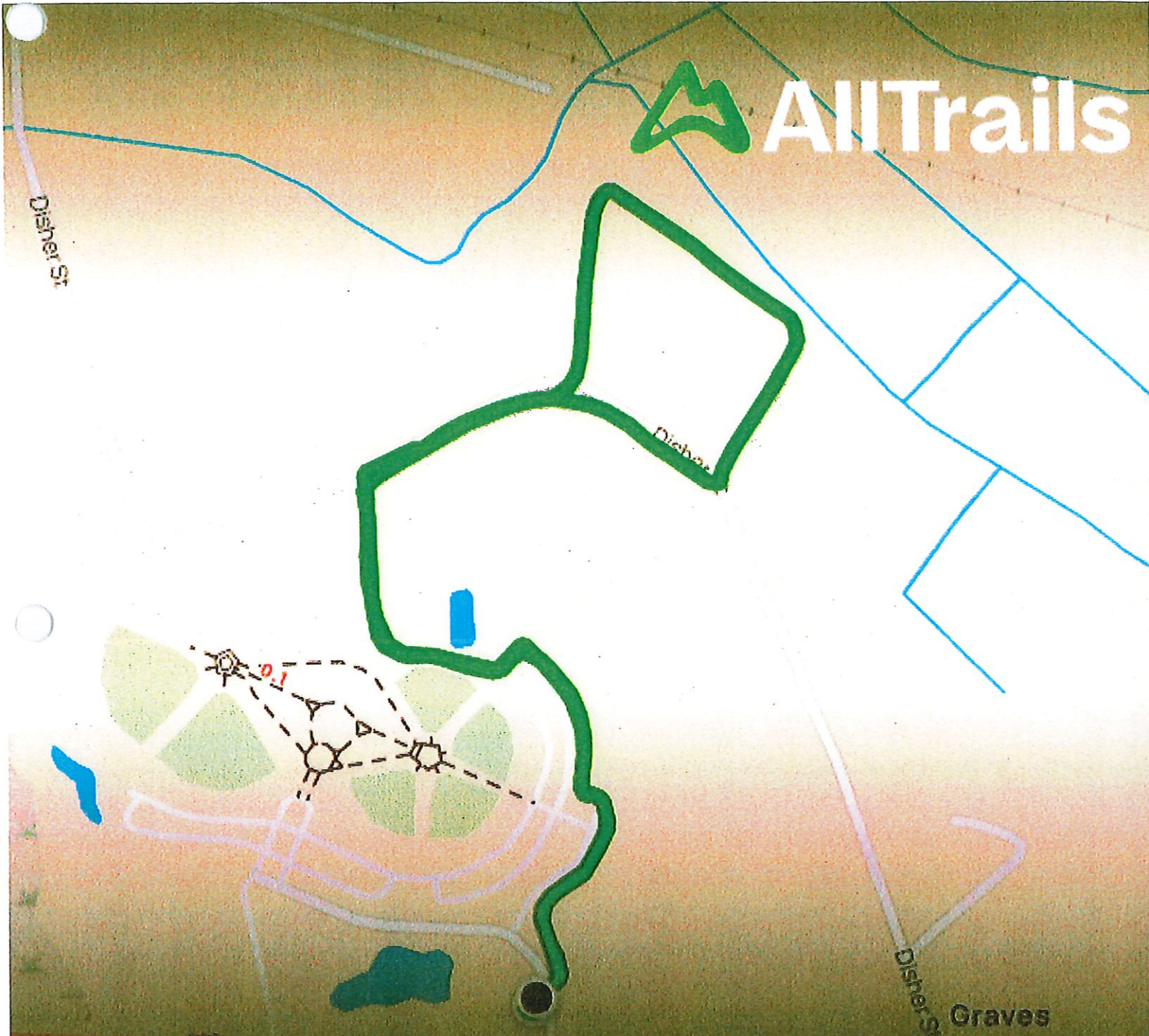
Highmarket St



TRAIL NAME	LOCATION	USAGE	TYPE	MILES	SURFACE
TIMBER CUT TRAIL	8 OAKS	HIKE/ BIKE	LOOP	1.8	DIRT
TRAIL HEAD	EIGHT PARK OAKS ENTRANCE PARKING LOT (OUTSIDE THE GATE)				
TRAIL / ROUTE MARKINGS	GREEN				
DISCRIPTION / COMMENTS					
THE TIMBER CUT TRAIL IS A LOOP TRAIL OFF OF THE 8 OAKS WALKING TRAIL LOOP THE TOTAL DISTANCE INCLUDING THE 8 OAKS TRAIL TO GET TO AND BACK FROM THE TIMBER CUT TRAIL IS 1.8 MILES.					
DISTANCE MILES					
0.00	8 OAKS TRAILHEADS				
0.00	FOLLOW THE 8 OAKS WALKING TRAIL(YELLOW MARKERS) TO THE TIMBER CUT TRAIL TRAIL-HEAD				
0.40	TIMBER CUT TRAIL HEAD STARTS (GO STRAIGHT FOLLOWING GREEN MARKERS)				
0.50	TURN RIGHT AND GO TO THE FIRST LEFT				
0.70	TURN LEFT				
0.80	TURN RIGHT (BLUE TRAIL GOES LEFT) FOLLOW TIMBER CUT TRAIL AS IT WILL CURVE TO THE RIGHT				
1.10	TRAIL TURNS TO THE RIGHT BLUE TRAIL GOES LEFT AGAIN				
1.20	CONTINUE STRAIGHT				
1.30	TURN LEFT				
1.40	TURN LEFT ON TO 8 OAKS WALKING TRAIL				
1.80	RETURN TO 8 OAKS TRAILHEAD				



AllTrails



Mountain biking

Elev. gain

Time

1.8 mi

10 ft

18:39



TRAIL NAME	LOCATION	USAGE	TYPE	MILES	SURFACE
RED COYOTE TRAIL	8 OAKS PARK	HIKE/BIKE	LOOP	2.3	DIRT
TRAIL HEAD	EIGHT PARK OAKS ENTRANCE PARKING LOT (OUTSIDE THE GATE)				
TRAIL / ROUTE MARKINGS	RED				
DISCRIPTION / COMMENTS					
<p>THE RED COYOTE TRAIL IS A LOOP TRAIL OFF OF THE 8 OAKS WALKING TRAIL LOOP THE TOTAL DISTANCE INCLUDING THE 8 OAKS TRAIL TO GET TO AND BACK FROM THE RED COYOTE TRAIL IS 2.3 MILES.</p> <p>TOTAL DISTANCE OF THE 8 OAKS WALKING TRAIL / RED COYOTE TRAIL AND RAILROAD SPUR TRAIL = 2.8 MILES</p>					
DISTANCE MILES					
0.00	8 OAKS TRAILHEADS				
0.00	FOLLOW THE 8 OAKS WALKING TRAIL(YELLOW MARKERS) TO THE RED COYOTE TRAIL TRAIL-HEAD				
0.50	RED COYOTE TRAIL HEAD STARTS (GO STRAIGHT FOLLOWING RED MARKERS)				
1.0	TURN LEFT				
1.1	TURN LEFT (RAIL ROAD SPUR TRAIL IS STRAIGHT ADDS 0.8 MILES TO THE HIKE)				
1.3	TRAIL CURVES TO THE LEFT				
1.4	TRAIL TURNS TO THE RIGHT				
1.5	TURN RIGHT TRAIL LOOPS AROUND FOR 0.2 MILES				
1.7	TURN RIGHT				
1.8	TURN LEFT OR RIGHT ON TO 8 OAKS EXERCISE TRAIL				
2.3	RETURN TO 8 OAKS TRAILHEAD				



AllTrails



Mountain biking

Elev. gain

Time

2.3 mi

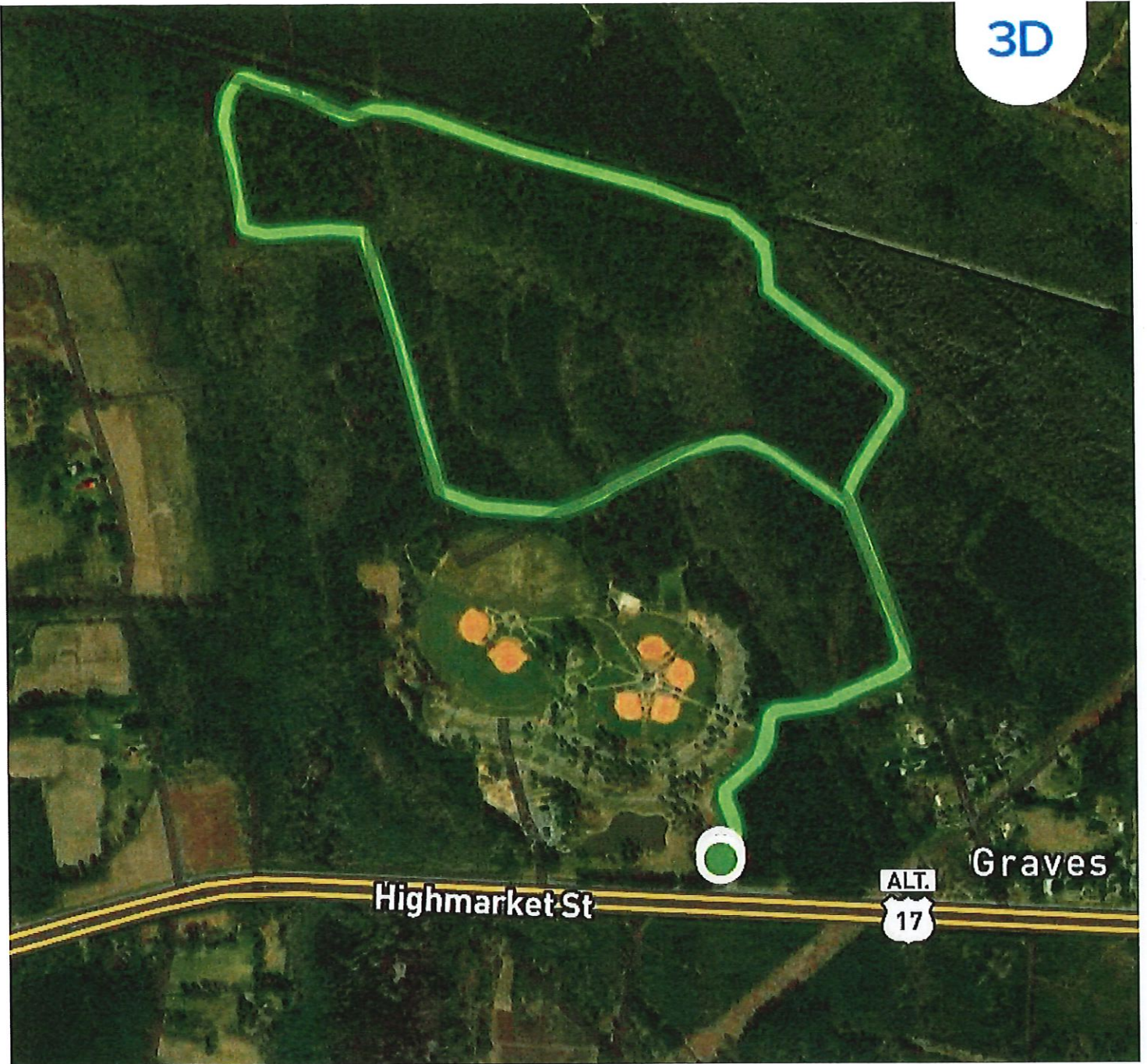
0 ft

23:45



TRAIL NAME	LOCATION	USAGE	TYPE	MILES	SURFACE
GRAY SQUIRREL TRAIL	8 OAKS PARK	HIKE/ BIKE	LOOP	2.8	DIRT
TRAIL HEAD	EIGHT PARK OAKS ENTRANCE PARKING LOT (OUTSIDE THE GATE)				
TRAIL / ROUTE MARKINGS	BLUE				
DISCRIPTION / COMMENTS					
<p>THE GRAY SQUIRREL TRAIL IS A LOOP TRAIL OFF OF THE 8 OAKS OUTER WALKING TRAIL LOOP THE TOTAL DISTANCE INCLUDING THE 8 OAKS TRAIL TO GET TO AND BACK FROM THE GRAY SQUIRREL TRAIL IS 2.8 MILES. TOTAL DISTANCE OF THE 8 OAKS WALKING TRAIL / GRAY SQUIRREL TRAIL AND RAILROAD SPUR TRAIL = 3.3 MILES</p>					
DISTANCE MILES					
0.00	8 OAKS TRAILHEADS				
0.20	FOLLOW THE 8 OAKS WALKING TRAIL(YELLOW MARKERS) TO THE BLUE TRAIL TRAIL-HEAD				
0.20	FOLLOW THE BLUE TRAIL MARKERS. GO PAST THE GATE FOLLOW THE TRAIL AROUND TO THE LEFT				
0.40	CONTINUE STRAIGHT - TRAIL TO RIGHT IS ADEAD END				
0.50	TRAIL TURNS RIGHT FOLLOW TRAIL FOR 0.80 MILES				
1.30	CONTINUE STRAIGHT TRAIL INTERSECTS WITH RED TRAIL				
1.40	TURN LEFT (RAIL ROAD SPUR TRAIL IS STRAIGHT ADDS 0.5 MILES TO THE HIKE)				
1.50	TRAIL TURNS TO THE LEFT				
1.60	TURN RIGHT				
1.90	TURN LEFT CONTINUE ON THE PATH 0.40 MILES				
2.30	VEER RIGHT ON TRAIL				
2.60	RETURN TO YELLOW TRAIL AND TURN LEFT				
2.80	RETURN TO 8 OAKS TRAILHEAD				
TRAIL NAME	LOCATION	USAGE	TYPE	MILES	SURFACE

3D



 AllTrails

Highmarket St

Elev. gain

Time

2.8 mi

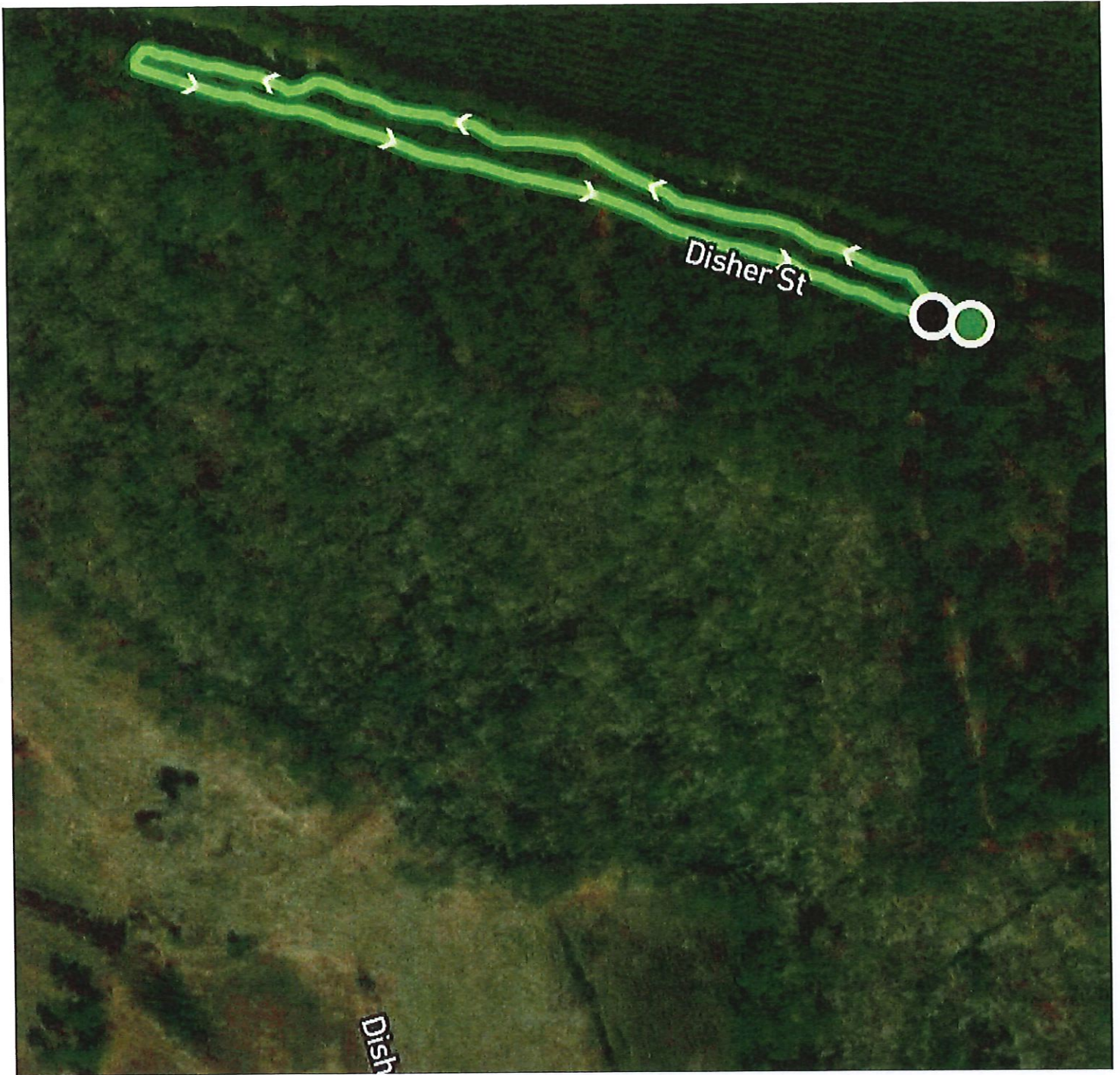
13 ft

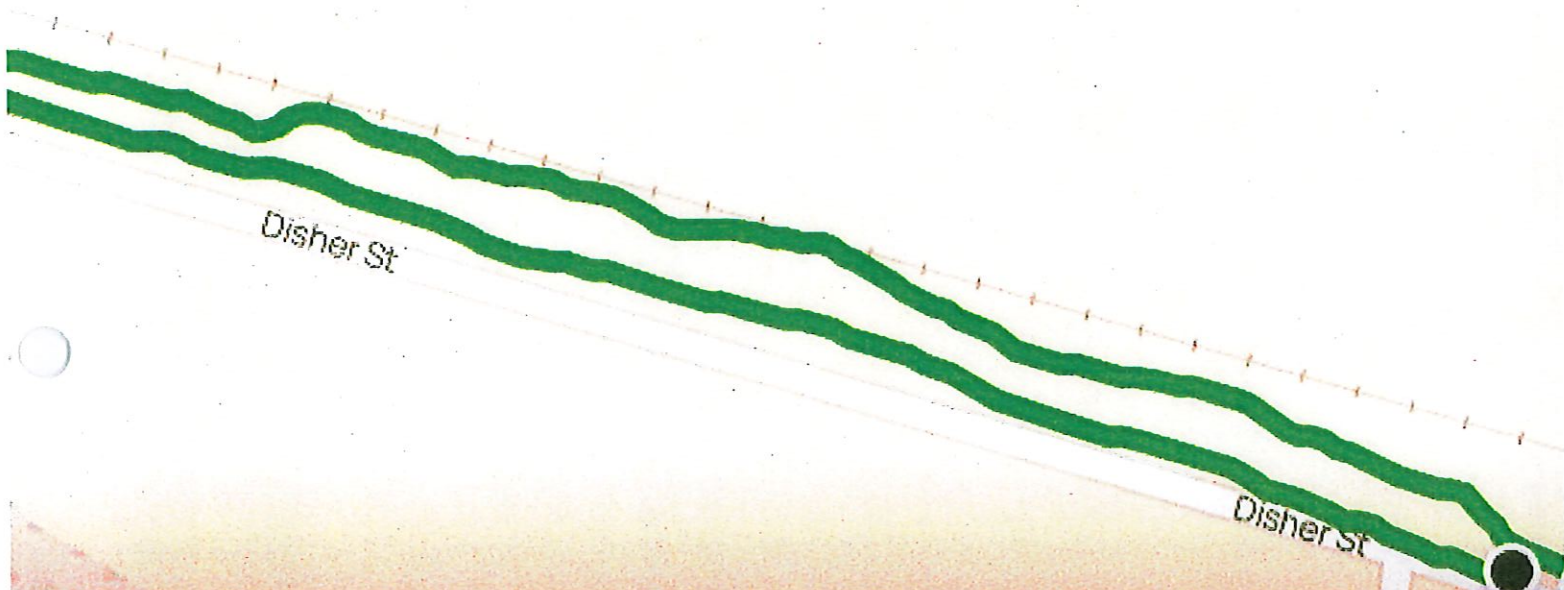
27:45

Graves



TRAIL NAME	LOCATION	USAGE	TYPE	MILES	SURFACE
RAILROAD SPUR TRAIL	8 OAKS	HIKE/ BIKE	OUT / BACK	0.8	DIRT
TRAIL HEAD		EIGHT PARK OAKS ENTRANCE PARKING LOT (OUTSIDE THE GATE)			
TRAIL / ROUTE MARKINGS		BLACK			
DISCRIPTION / COMMENTS					
<p>THE RAILROAD SPUR TRAIL IS AN OUT AND BACK TRAIL OFF OF THE RED TRAIL. A NICE LITTLE SECTION TO ADD DISTANCE TO THE RED COYOTE TRAIL OR</p> <p>TOTAL DISTANCE OF THE 8 OAKS WALKING TRAIL / RED COYOTE TRAIL AND RAILROAD SPUR TRAIL = 2.8 MILES</p> <p>TOTAL DISTANCE OF THE 8 OAKS WALKING TRAIL / BLUE TRAIL AND RAILROAD SPUR TRAIL = 3.3 MILES</p>					
DISTANCE MILES					
0.00	GO STRAIGHT ON THE RAILROAD SPUR TRAIL (RED COYOTE TRAIL GOES LEFT)				
0.25	TURN AROUND AND HEAD BACK				
0.50	TRAIL END AT RED COYOTE TRAIL (TURN RIGHT)				





Hiking

0.5 mi

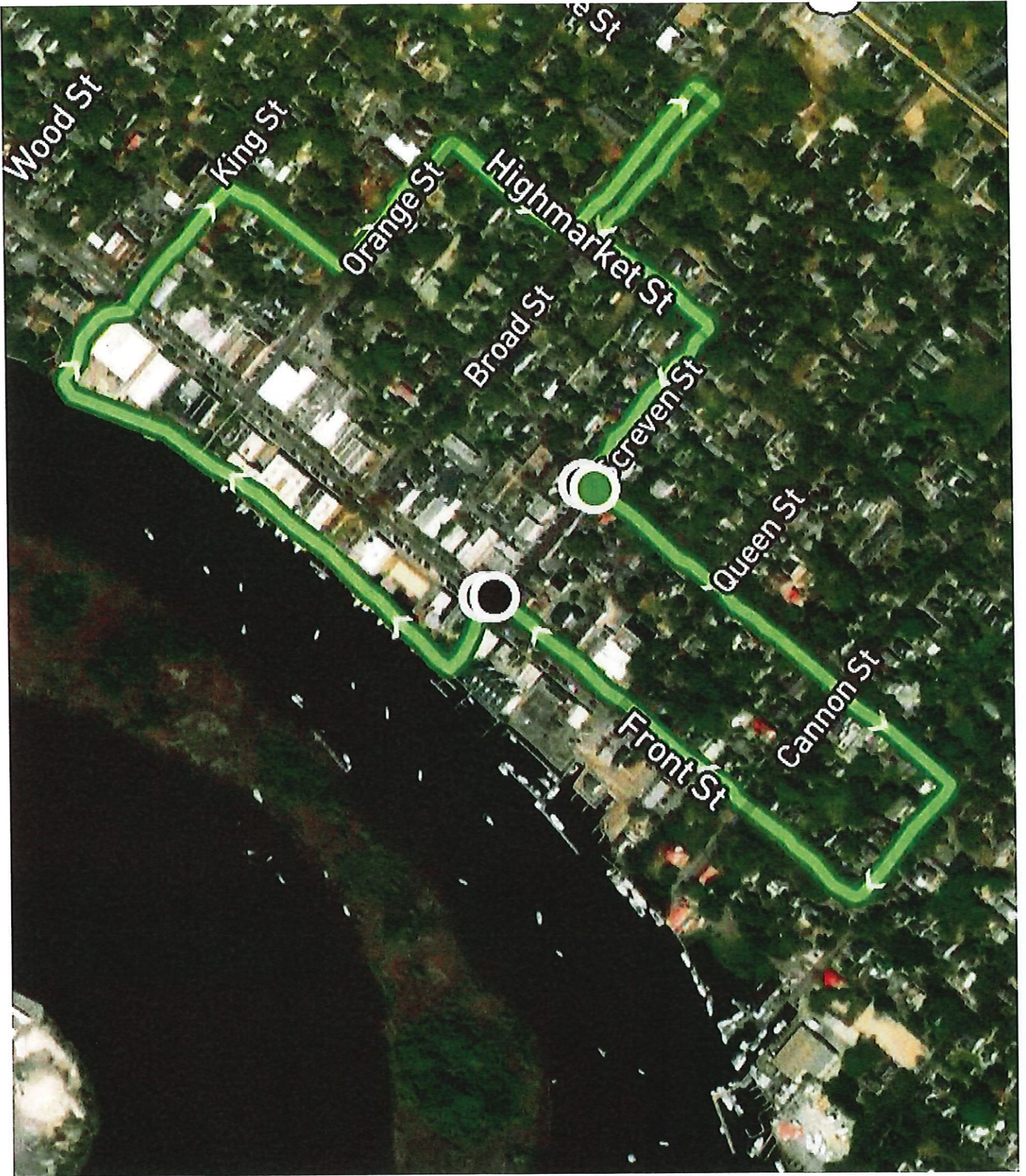
Elev. gain

0 ft

Time

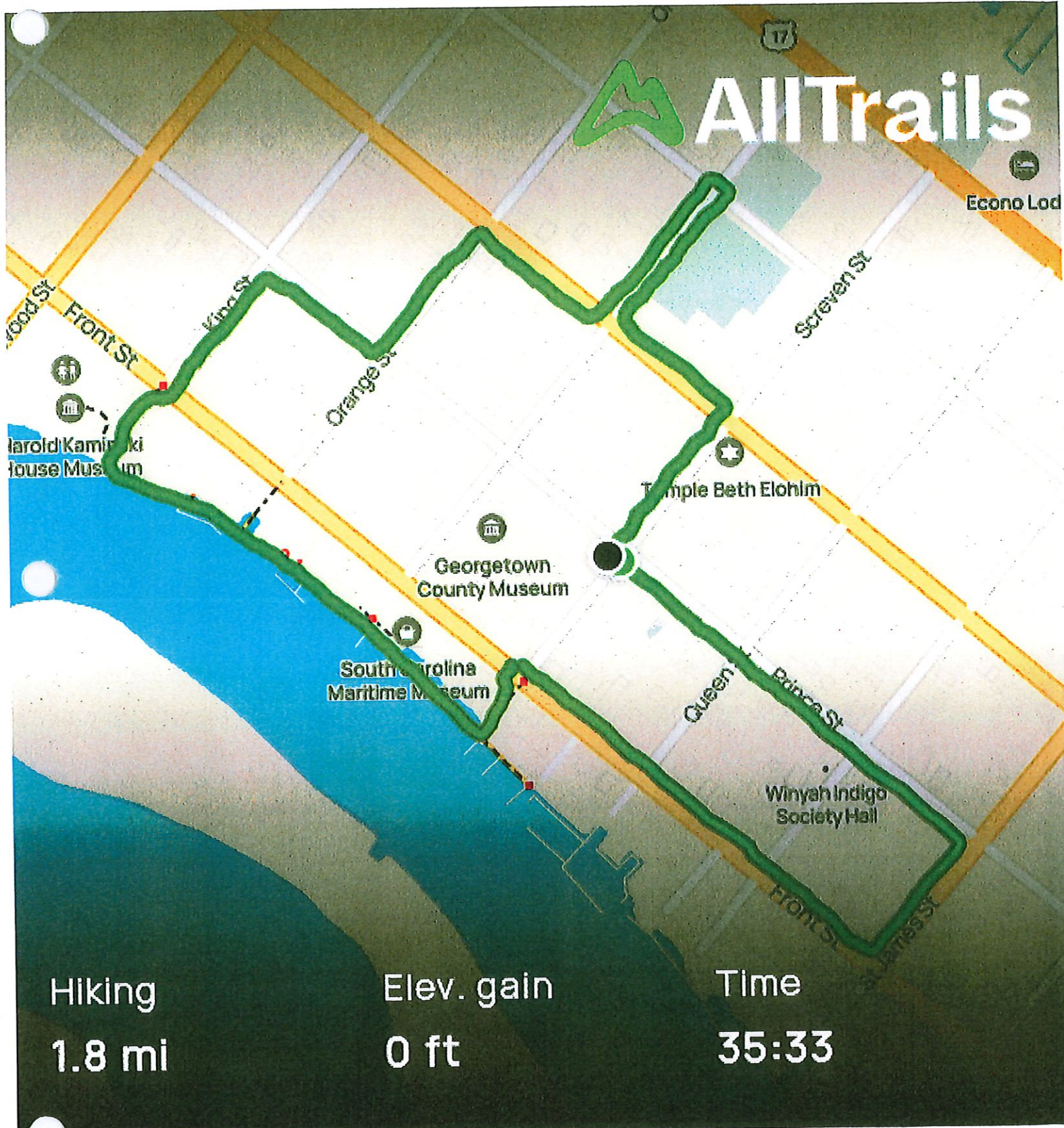
10:43

GEORGETOWN HISTORIC ROUTE	DOWN TOWN GEORGETOWN	HIKING / Walking	LOOP	2.0	PAVEMENT / WOOD
TRAIL HEAD		GEORGETOWN CO. OLD COURTHOUSE			
TRAIL / ROUTE MARKINGS		NONE			
DISCRIPTION / COMMENTS					
<p>THIS ROUTE STARTS AT THE GEORGETOWN COUNTY COURTHOUSE AND GOES THROUGH THE HISTORIC DISTRICT AND HARBOR WALK IN GEORGETOWN FOR A DISTANCE OF 2.0 MILES. THE ROUTE PASSES SEVERAL HISTORICAL SITES ALONG THE WAY. GIVE YOUR SELF TIME TO ENJOY ALL THE SITES AND THE VIEWS FROM THE HARBOR WALK.</p> <p style="text-align: center;">USE CAUTION CROSSING ROADWAYS AND TRAFFIC</p>					
START IN FRONT OF THE OLD GEORGETOWN COUNTY COURTHOUSE AND PROCEED EAST ON PRINCE STREET FOR 3 BLOCKS					
TURN RIGHT ON JAMES ST AND GO 1 BLOCK TO FRONT STREET					
TURN RIGHT ON FRONT STREET AND GO 3 BLOCKS TO THE CLOCK TOWER ON YOUR LEFT					
AT THE CLOCK TOWER HEAD TOWARDS THE HARBORWALK ENTRANCE AND PROCCED WEST ON THE HARBOR WALK					
FOLLOW THE HARBOR WALK TO JOSEPH RAINEY PARK. TURN RIGHT THROUGH THE PARK BACK TO FRONT STREET					
TURN RIGHT ON FRONT STREET AND GO TO KING ST. TURN LEFT ON KING ST.					
GO 1 BLOCK ON KING ST AND TURN RIGHT ON PRINCE STREET AND GO 1 BLOCK TO ORANGE ST					
TURN LEFT ON ORANGE STREET AND GO 1 BLOCK TO HIGH MARKET STREET					
AT HIGHMARKET ST TURN RIGHT AND GO 1 BLOCK TO BROAD ST					
AT BROAD ST TURN LEFT AND STAY ON THE LEFT SIDE OF THE STREET. GO 1 BLOCK TO DUKE ST CROSS OVER BROAD ST AND RETURN TO HIGHMARKET ST ON THE RIGHT SIDE OF BROAD ST.					
TURN LEFT ON HIGHMARKET ST AND GO 1 BLOCK TO SCREVEN ST AND TURN RIGHT TO THE OLD COURTHOUSE					
ROUTE COMPLETED (1.7 MILES)					
TRAIL NAME	LOCATION	USAGE	TYPE	MILES	SURFACE





AllTrails



Hiking
1.8 mi

Elev. gain
0 ft

Time
35:33