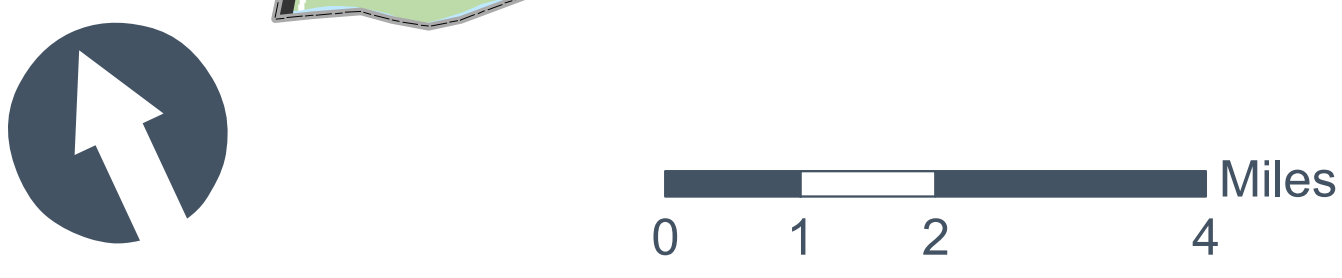
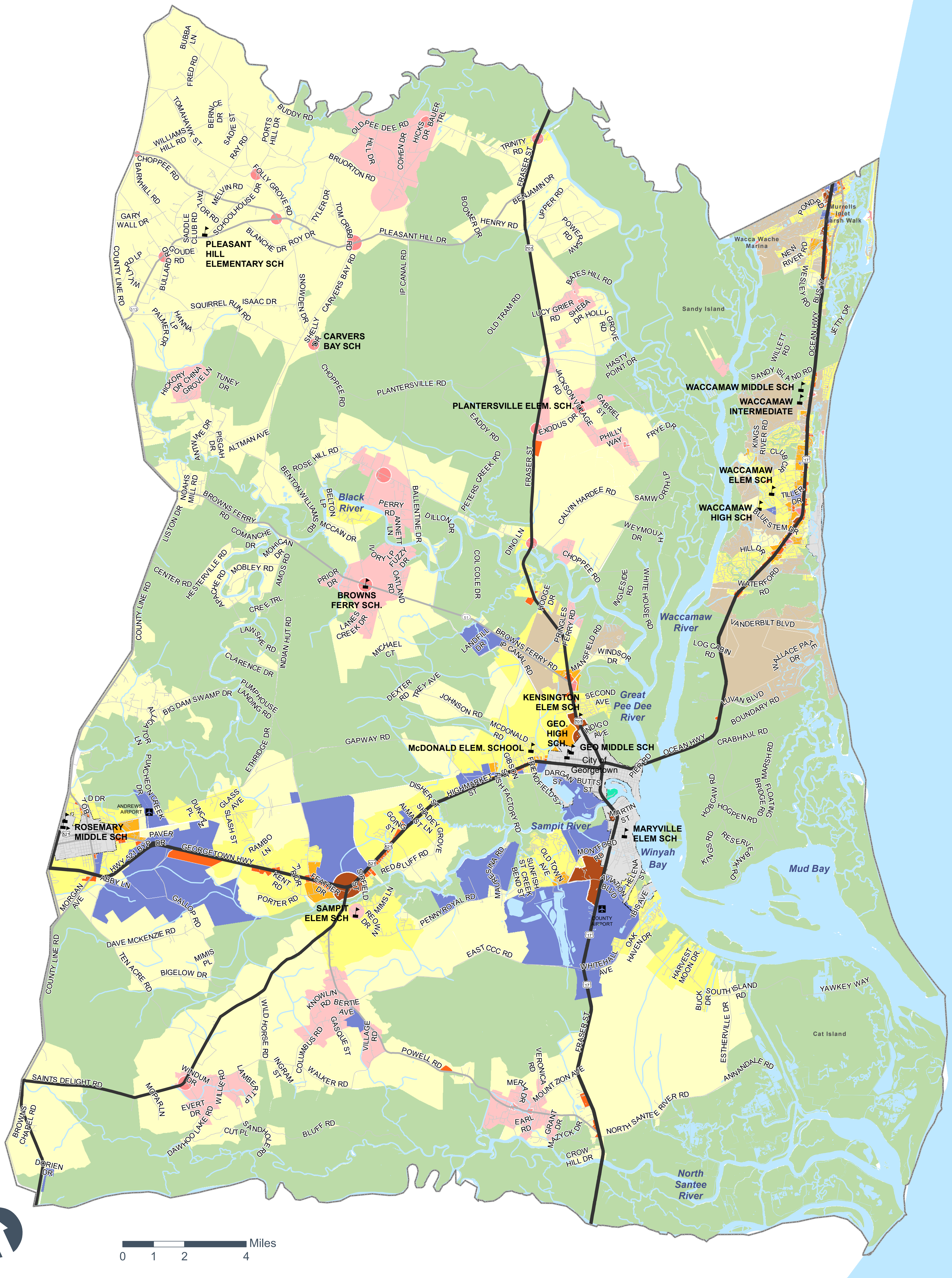


Future Land Use

- CONAG - Conservation / Agriculture
- RR - Rural Residential
- RV - Rural Village
- VC - Village Center
- RES - Residential
- COVCOM - Covenant Community
- RMU - Residential Mixed Use
- CC - Commercial Corridor
- CMU - Community Mixed Use
- EMP - Employment
- GP - Georgetown Port



DISCLAIMER: This map was created using the best available data, and is provided "as-is," without warranty of any representation of accuracy, timeliness, reliability, or completeness. The information herein does not necessarily represent a legal survey. All decisions based on the information herein shall be made with the full understanding that this data is dynamic and in a constant state of maintenance.

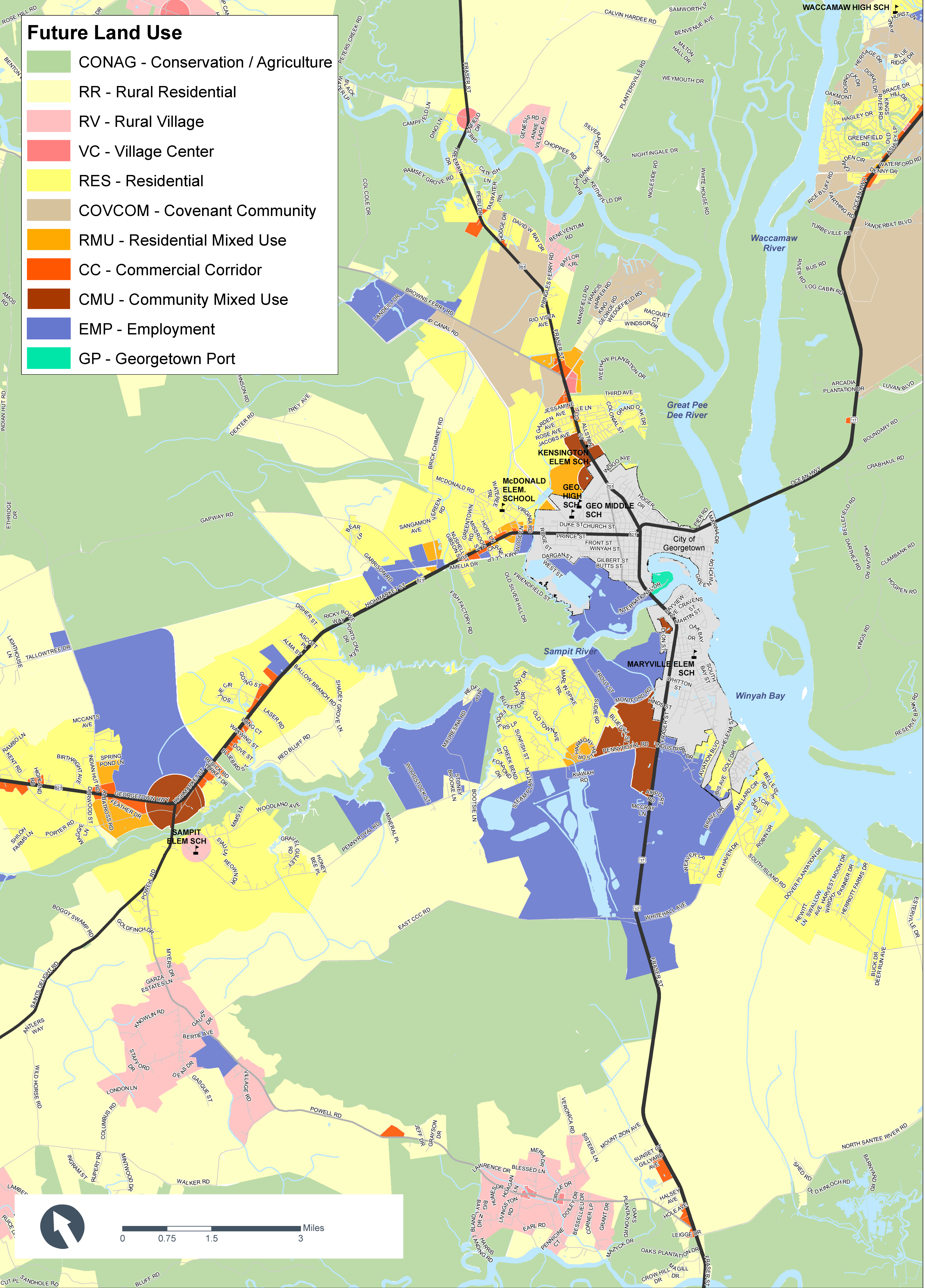
Georgetown County Land Use Element

- Future Land Use and Conservation Map -



Future Land Use

- CONAG - Conservation / Agriculture
- RR - Rural Residential
- RV - Rural Village
- VC - Village Center
- RES - Residential
- COVCOM - Covenant Community
- RMU - Residential Mixed Use
- CC - Commercial Corridor
- CMU - Community Mixed Use
- EMP - Employment
- GP - Georgetown Port



Georgetown County Land Use Element

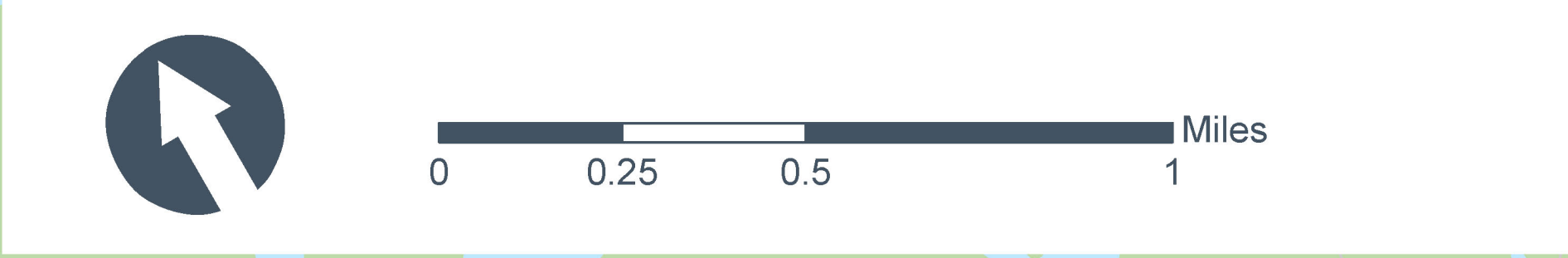
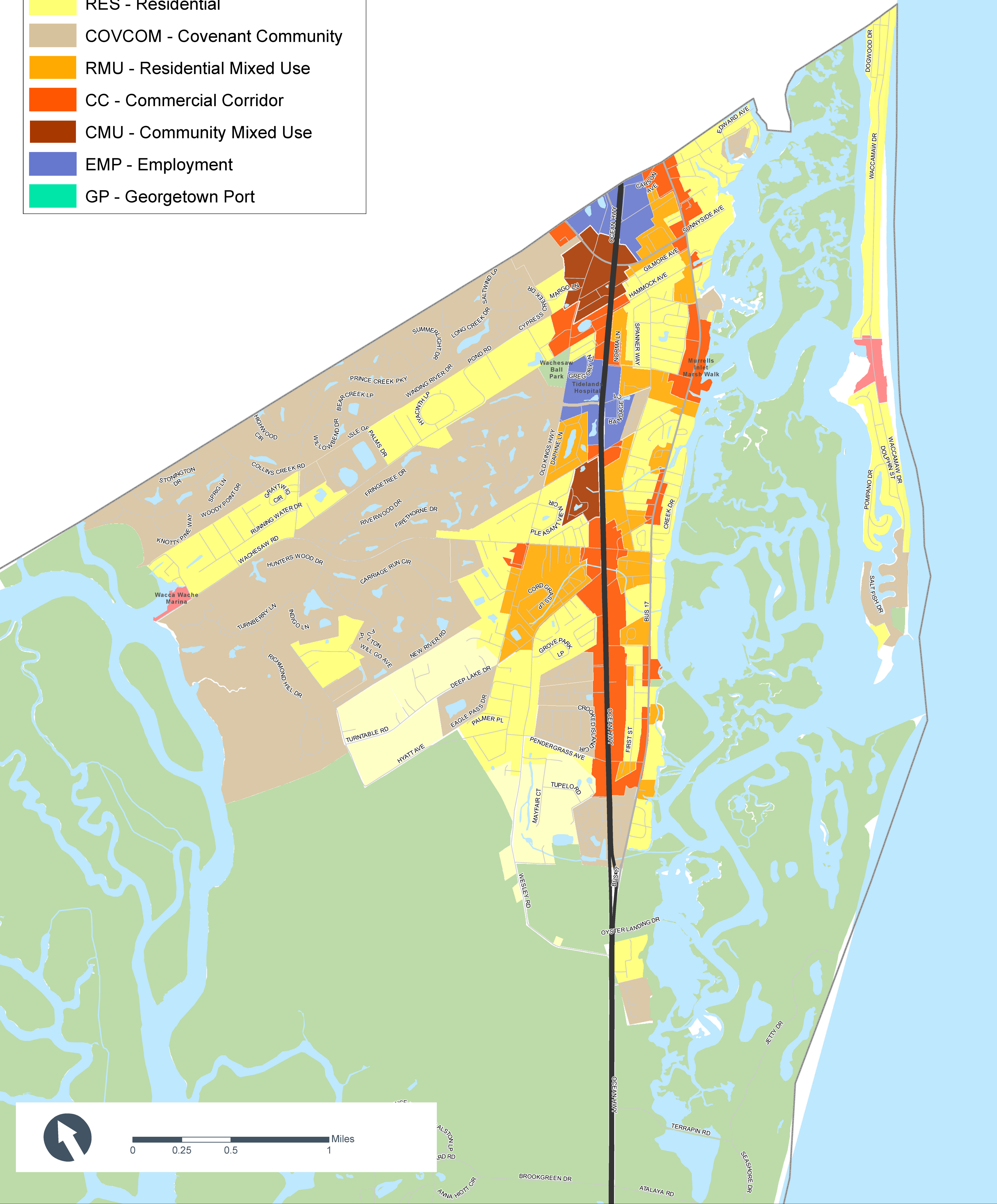
- Future Land Use and Conservation Map -



DISCLAIMER: This map was created using the best available data, and is provided "as-is", without warranty of any representation of accuracy, timeliness, reliability, or completeness. The information herein does not necessarily represent a legal survey. All decisions based on the information herein shall be made with the full understanding that this data is dynamic and in a constant state of maintenance.

Future Land Use

- CONAG - Conservation / Agriculture
- RR - Rural Residential
- RV - Rural Village
- VC - Village Center
- RES - Residential
- COVCOM - Covenant Community
- RMU - Residential Mixed Use
- CC - Commercial Corridor
- CMU - Community Mixed Use
- EMP - Employment
- GP - Georgetown Port



Georgetown County Land Use Element

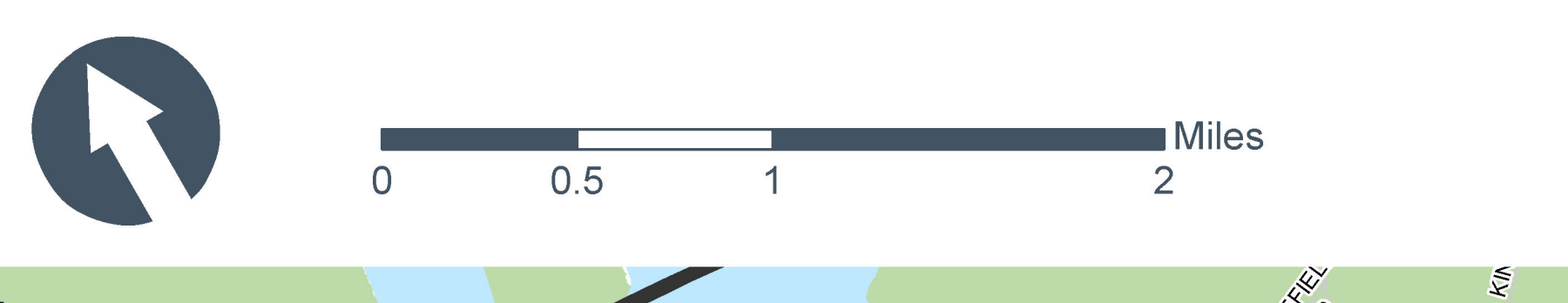
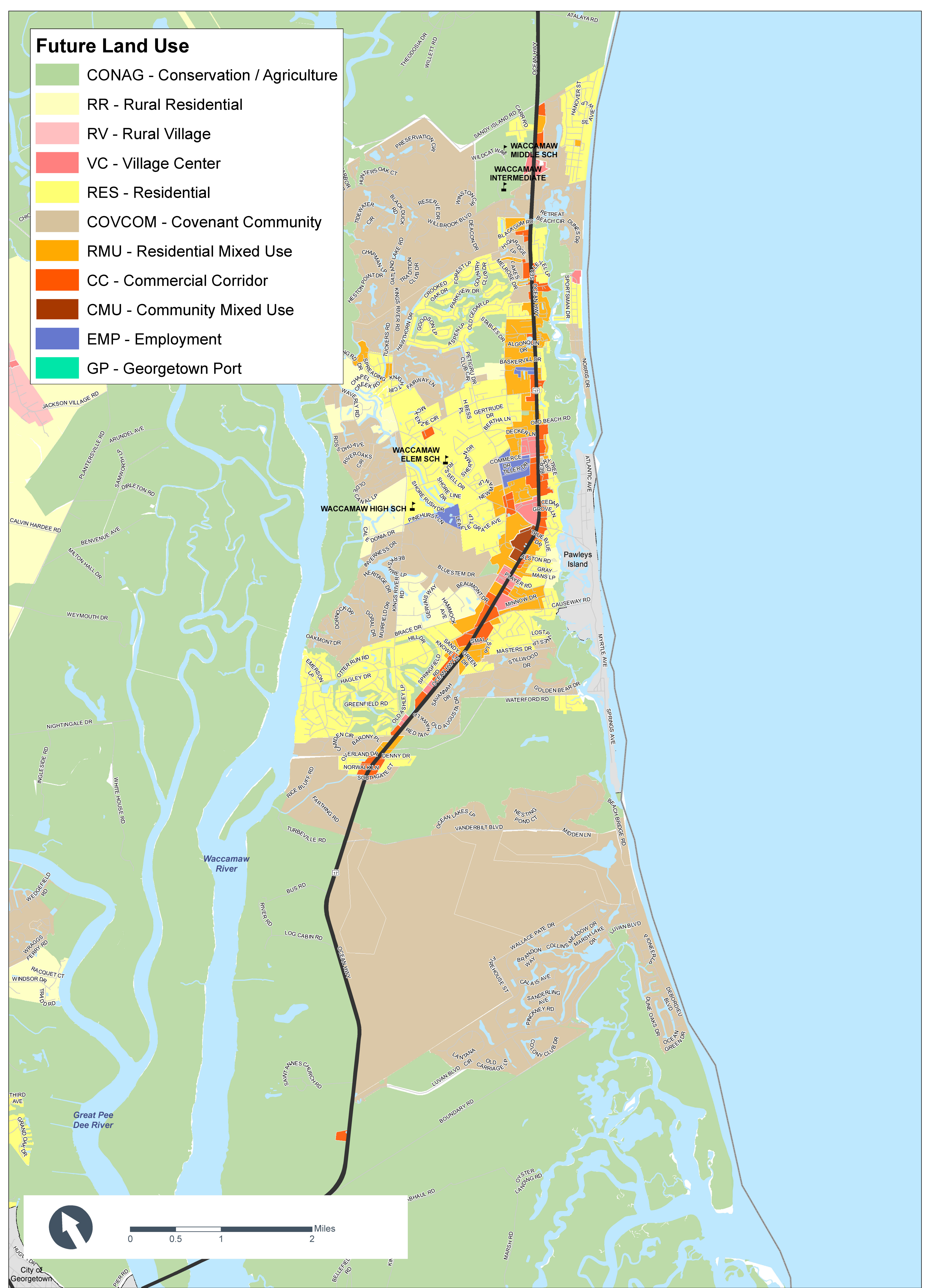
- Future Land Use and Conservation Map -



DISCLAIMER: This map was created using the best available data, and is provided "as-is", without warranty of any representation of accuracy, timeliness, reliability, or completeness. The information herein does not necessarily represent a legal survey. All decisions based on the information herein shall be made with the full understanding that this data is dynamic and in a constant state of maintenance.

Future Land Use

- CONAG - Conservation / Agriculture
- RR - Rural Residential
- RV - Rural Village
- VC - Village Center
- RES - Residential
- COVCOM - Covenant Community
- RMU - Residential Mixed Use
- CC - Commercial Corridor
- CMU - Community Mixed Use
- EMP - Employment
- GP - Georgetown Port



DISCLAIMER: This map was created using the best available data, and is provided "as-is", without warranty of any representation of accuracy, timeliness, reliability, or completeness. The information herein does not necessarily represent a legal survey. All decisions based on the information herein shall be made with the full understanding that this data is dynamic and in a constant state of maintenance.

Georgetown County Land Use Element

- Future Land Use and Conservation Map -

